



# COMPANY PROFILE

 **EL SEWEDY**  
READY MIX **2021**



# Table Of Contents

1. Certificate of Performance
2. Organization Chart
3. Reference List
4. Equipment List
5. Quality Plan
6. Materials Inspection Plan
7. HSE Policy
8. Materials Tests
9. Petrographic Description
10. Admixture Datasheets
11. Calibration Certificates
12. Compressive Testing Results



# CERTIFICATE OF PERFORMANCE

 **EL SEWEDY**  
READY MIX **2021**






معهد بحوث مواد البناء وضبط الجودة

يشهد

المركز القومي لبحوث الإسكان والبناء  
معهد بحوث المواد وضبط الجودة  
بأن محطة خلط الخرسانة الخاصة بـ  
السويدي للخرسانة الجاهزة  
التجمع الخامس - المنطقة الصناعية الثالثة  
قد حققت اشتراطات المواصفة الفنية للخرسانة الجاهزة  
Class A ( 96% )  
(للخلاطة رقم (١) و للخلاطة رقم (٢))

وتصلح المحطة لإنتاج خرسانة ذات مقاومة ضغط حتى ٤٠٠ كجم/سم<sup>٢</sup> بمحتوي اسمنت ٥٠٠ كجم/م<sup>٣</sup> مع  
الالتزام الكامل بنسب مكونات الخلط الواردة بالتقرير للحصول على المقاومة المذكورة

على أن تلتزم المحطة باشتراطات الكود المصري لتصميم وتنفيذ المنشآت الخرسانية  
رقم ٢٠٣ لسنة ٢٠٠٧ من حيث جودة المواد واعتماد مصادرها ودورية الاختبارات وتوفير  
متطلبات ضبط الجودة الداخلي والخارجية وكذلك اشتراطات المواصفة الفنية للخرسانة الجاهزة  
لسنة ٢٠٠٧. مع مراعاة الملاحظات الموضحة بهذه الشهادة

١٢ أغسطس ٢٠٢٠  
١١ أغسطس ٢٠٢١

تاريخ إصدار الشهادة  
تاريخ انتهاء الشهادة

**ملاحظات هامة**

\* تسري هذه الشهادة فقط في حالة تقديم المحطة المستندات التي تفيد بإجراء اختبار التشاغل القوي (السيبسي والكربونات) للركام الكبير قبل التوريد للمحطة لمن يهمة الأمر.

\* التقرير الفني جزء لا يتجزأ من الشهادة.

\* يراعى توفير موتور تليب لتشوينات الإضافات.

\* يراعى تطبيق احتياطات الكود نظرا لزياده محتوى الاسمنت في الخلطة الخرسانية عن الحد الأقصى المسموح به في الكود المصري لتصميم وتنفيذ المنشآت الخرسانية رقم ٢٠٣ لسنة ٢٠١٨

\* يراعى التأكد من نظافة ريش الخلاطة وإزالة أي عوالق بها والتأكد من ضبط زمن الخلط اللازم وعمل مراجعة شاملة لأسلوب الخلط لتفي الخرسانة بمتطلبات التجانس طبقا بالمواصفة.

\* لا تسري هذه الشهادة في حالة عدم إجراء الاختبارات الدورية على المواد المستخدمة والخرسانة المنتجة طبقاً لجدول (٢-٨) بالكود المصري رقم ٢٠٣ لسنة ٢٠١٨ وتقديم التقارير المعدة بمعرفة المركز القومي لبحوث الإسكان والبناء - معهد بحوث مواد البناء وضبط الجودة.

رئيس مجلس الإدارة  
مدير المعهد

أحمد محمد الحليم الجابري  
أحمد خالد محمد العنبري

شهاده رقم ١٦٩ / ٢٠٢٠



## شهادة حسن تنفيذ

تشهد شركة / اوراسكوم للانشاءات، بأن شركة السويدي للخرسانة الجاهزة قد قامت بتوريد خرسانة جاهزة بمشروع / بنك كريدى اجريكول مصر بالتجمع الخامس وذلك خلال الفترة من 2011/1/1 إلى 2013/10/31، وأنها قد قامت بتنفيذ الأعمال المسندة إليها بدرجة عالية من الإتضباط والإتقان من حيث التنفيذ والجودة وحسن الإدارة مما يؤهلها للعمل مع الشركة في أي مشروعات مستقبلية .

وهذه شهادة منا بذلك .

  
م / جوزيف عبد المسيح  
مدير المشروع



ENGINEERING Company FOR Integrated Projects

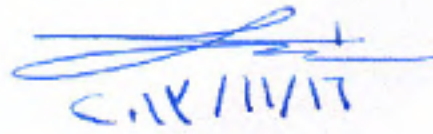
الشركة الهندسية للأعمال المتكاملة

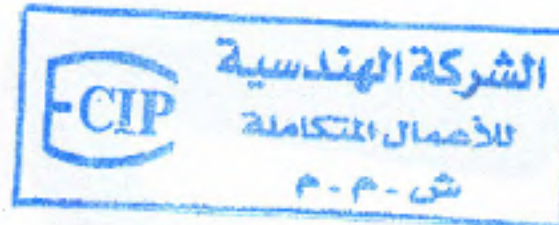
بتاريخ: - (2013/11/16)

### شهادة حسن تنفيذ

تشهد الشركة الهندسية للأعمال المتكاملة  
بأن شركة السويدى للخرسانة الجاهزة قد قامت بتوريد خرسانة جاهزة بمشروع إنشاء المركز التجارى  
بمجمع مارفل سيتى السكنى - التجمع الخامس - مدينة القاهرة الجديدة و ذلك فى القتره من 2012/8/2 و  
حتى تاريخه  
و أنها قد قامت بتنفيذ الأعمال المسندة إليها بجودة عالية و التزام بمواعيد الصب المحددة مما يؤهلها  
للعمل مع الشركة فى أى مشروعات مستقبلية  
و هذه شهادة منا بذلك دون أدنى مسؤولية قانونية على الشركة الهندسية للأعمال المتكاملة

مدير المشروع  
مهندس / أشرف زكي

  
2013/11/16



مقر الشركة:

٢١ شارع ٢٧٥ - المعادي الجديدة - القاهرة  
أرضى : ٢٥١٧٤٧٨١ - ٢٥١٧٤٧٨٠ (٠٢)  
فاكس : ٢٥١٦٩٦٨٧ (٠٢)  
محمول : ٢٠٩٢٥٠٠ (٠١٠)

info@ecipmaadi.com  
ecip\_maadi@hotmail.com  
ecip\_maadi@yahoo.com  
www.ecipmaadi.com

Grand  
PLAZA

التاريخ : ٢٠١٣/١١/١٨

## إشادة بالأداء

تشيد شركة / جراند بلازا للإستثمار العقارى والسياحى بأن شركة السويدى للخرسانة الجاهزة قد قامت بتوريد خرسانة جاهزة بمشروع / لاميرادا وذلك خلال الفترة من ٢٠١١/٠٢/٢٠ إلى ٢٠١٣/١١/١٧ وانها قد قامت بتنفيذ الأعمال المسندة إليها بدرجة عالية من الإنضباط والإتقان من حيث التنفيذ والجودة وحسن الإدارة مما يؤهلها للعمل مع الشركة فى أى مشروعات مستقبلية .

وهذه شهادة منا بذلك

نائب رئيس مجلس الإدارة والعضو المنتدب



المهندس / شريف فاروق عثمان

جراند بلازا للإستثمار العقارى والسياحى  
La Mirada



الشركة المصرية اليابانية للبناء والتشييد (إيجاب)  
EGYPTIAN JAPANESE FOR BLD. & CON. CO.

## شهادة حسن تنفيذ

تشهد الشركة المصرية اليابانية للبناء والتشييد

بأن شركة السويدي للخرسانة الجاهزة قد قامت بتوريد خرسانة جاهزة  
بمشاريع مجمع المخازن بالمنطقة الصناعية و القرية التكتيكية و تدعيم  
ضغوط المياه وفيلات قرية النخيل وذلك خلال الفترة من ٢٨ / ٣ / ٢٠١٢ و حتى  
تاريخه وأنها قد قامت بتنفيذ الأعمال المسندة إليها بدرجة عالية من الإنضباط  
والإتقان من حيث التنفيذ والجودة وحسن الإدارة مما يؤهلها للعمل مع الشركة في أي  
مشروعات مستقبلية .

وهذه شهادة منا بذلك و دون ادنى مسئولية على الشركة.

المكتب الفني

ندى ابراهيم / المهندسة

ندى ابراهيم كامل





## شكر وتقدير

السادة / شركة السويدي للخرسانة الجاهزة

تحية طيبة وبعد

نتقدم ادارة معهد القاهرة العالي للهندسة وعلوم الحاسب والادارة الى سيادتكم بخالص الشكر والعرفان لما بذلتموه تجاه اولادنا الطلاب خلال زيارتهم لمحطة خلط الخرسانة الجاهزة بالقاهرة الجديدة .

ساعين دوما مع سيادتكم على التواصل البناء

وتقبلو منا خالص الاحترام والتقدير

عميد المعهد



أ.د. أحمد البيلي

٢٠١٥ / ١٠ / ٢٠



**Cairo Higher Institute**  
For Engineering, Computer Science, & Management



**معهد القاهرة العالي**  
للهندسة وعلوم الحاسب والإدارة

شكرو وتقدير

الي / السادة شركة السويدى لصناعة الخرسانة الجاهزة

نرسل لسيادتكم خالص الاحترام والعرفان لحسن استقبالكم لابنائنا طلاب معهد القاهرة العالي للهندسة وعلوم الحاسب والادارة دفعة سنة اولي مدني لزيارة ميدانية لمحطة صناعة الخرسانة الجاهزة وذلك في يومى الاثنين والثلاثاء الموافق ( ١٤ ، ١٥ مارس ٢٠١٦ ) تحت اشراف الدكتورة عيبر المالكي مدرس خواص ومقاومة وضبط الجودة بالمعهد و التي اشادت بحسن الاستقبال والترحيب والتعاون من سيادتكم .

ولكم من ادارة المعهد كل الحب والتقدير

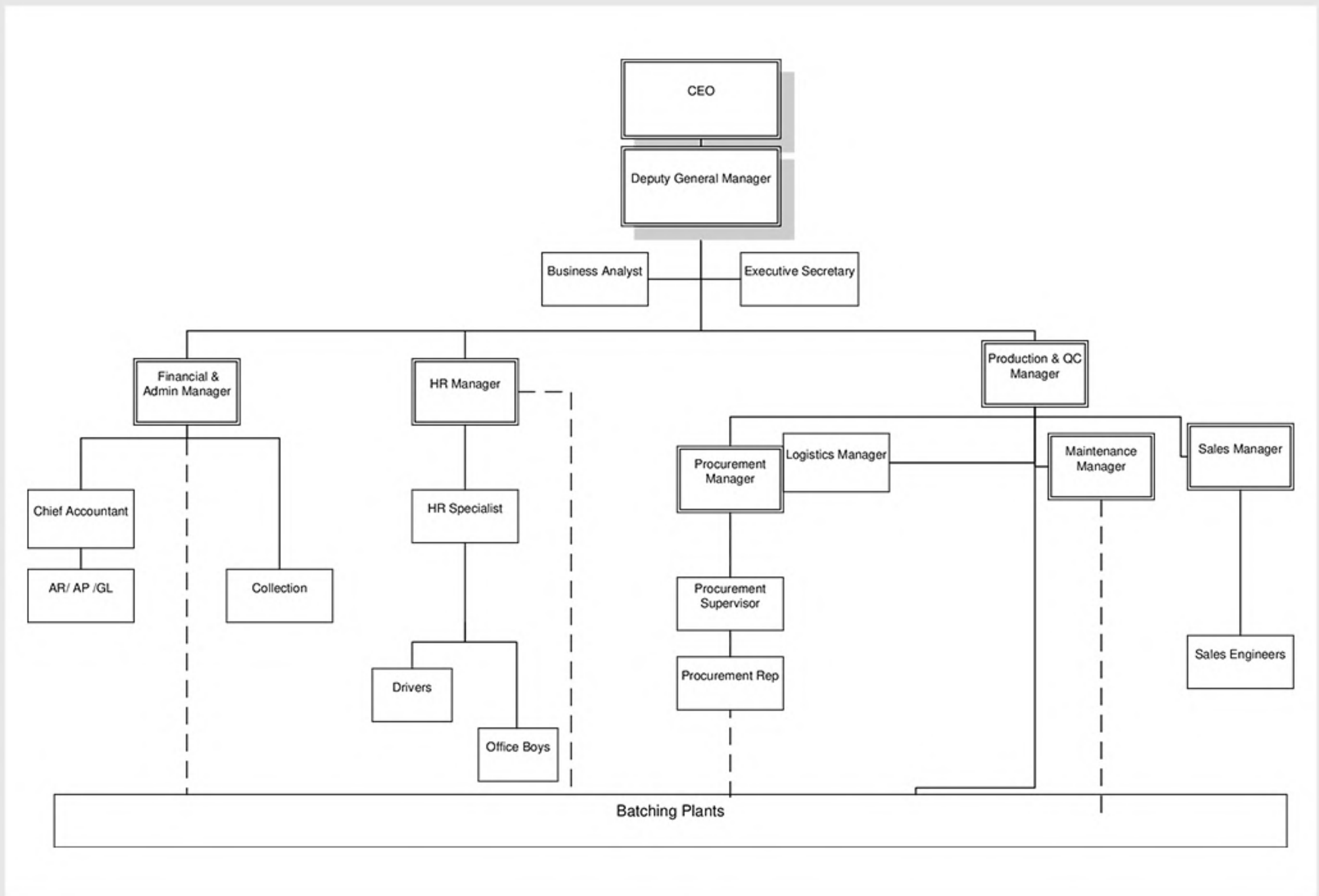
عميد المعهد  
أ. د / احمد الببلى

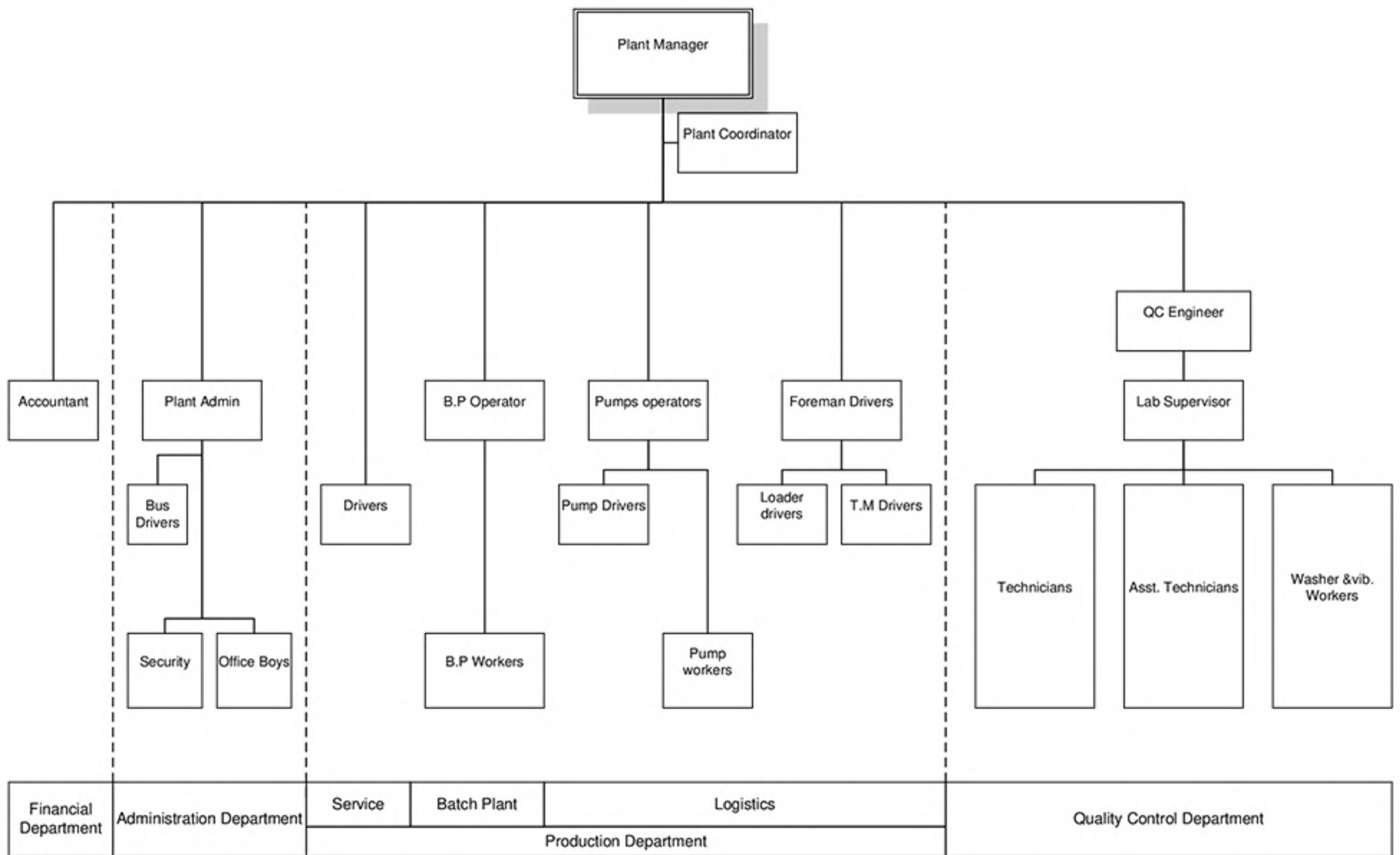


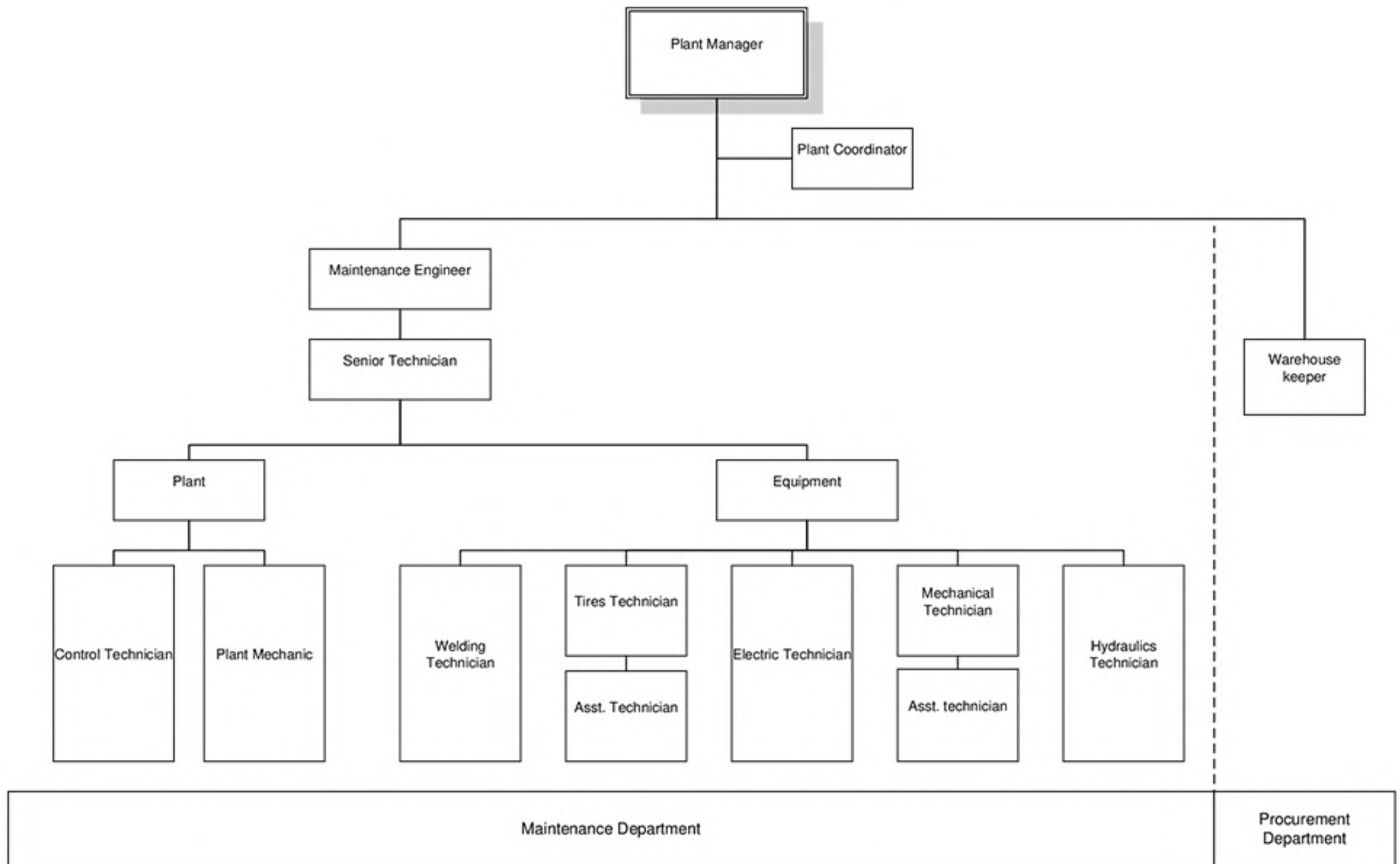


# ORGANIZATION CHART

 **EL SEWEDY**  
READY MIX **2021**









# REFERENCE LIST

 **EL SEWEDY**  
READY MIX **2021**

No.	Name	Project	Place
1	PSP	Power Plant	Beni Suef
2	El Sewedy Cement	Cement Factory	Ain El - Sukhna
3	Orascom Construction Industries	Credit Agricole Egypt	5 <sup>th</sup> Settlement
4	Orascom Construction Industries	El Galala Water Desalination	Ain El Sukhna
5	Emaar Egypt	Compound	New Cairo
6	Siac	Mivida	New Cairo
7	Abraj Misr	Florenta + Lavanda	New Cairo
8	Benaab	Patio five	Shorouk
9	Sam Crete Misr	Sewage stations	Ain El Sukhna Road
10	UECC	Palm Hills	New Cairo
11	Redcon	Cairo Festival	New Cairo
12	Redcon	Mivida	New Cairo
13	Redcon Spain	Cairo Festival	New Cairo
14	The Egyptian Eng.& Trad.Co. (JET)	Metropolitan School	1 <sup>th</sup> Settlement
15	Grand Plaza	LA Mirada	New Cairo
16	The Egyptian Eng.& Trad.Co. (JET)	Cairo Festival	New Cairo
17	Gama for trading and contracting	Oriana	New Cairo
18	Gama for trading and contracting	Mivida	New Cairo
19	El Emaar for construction	Mall	New Cairo
20	CMS (NOZOM)	Center Ville + Hyde Park	New Cairo
21	EL-Saeed General Contracting	Abraj EL-Nada	EL-Maadi
22	Idea Verdi	Water Way	5 <sup>th</sup> Settlement



23	Bena	Primera	6 <sup>th</sup> October
24	UECC	Capital Gardens	Shorouk
25	Hassan Allam's sons	Power Plant	Beni Suef
26	Rowad for Modern Engineering	Power Plant	Beni Suef
27	Maadi Group	New Cairo Medical	New Cairo
28	Maadi Group	Family Home	New Cairo
29	BIC	La Place	New Cairo
30	ACC	Mevida	New Cairo
31	Petrojet	Petro trade Building	Nasr City



# EQUIPMENT LIST

 **EL SEWEDY**  
READY MIX **2021**

Item	Description	Details	Capacity
Batching Plant	Fully Automatic Elba Batching Plant	Erected in 3 <sup>rd</sup> Settlement, New Cairo Batching Plant.	105 m <sup>3</sup> /hr 130 m <sup>3</sup> /hr
Batching Plant	Fully Automatic Elba Batching Plant	Erected in Ain El – Sukhna, Chinese land, Industrial Zone.	105 m <sup>3</sup> /hr
Batching Plant	Fully Automatic Elba Batching Plant	Erected in Beni Suef, Ghayada Power Plant, Industrial Zone.	105 m <sup>3</sup> /hr 130 m <sup>3</sup> /hr
Batching Plant	Fully Automatic Elba Batching Plant	Erected in Shorouk, Patio five.	105 m <sup>3</sup> /hr
Batching Plant	Fully Automatic NISBAU Batching Plant	Erected in 6 <sup>th</sup> of October, Oula Area	120 m <sup>3</sup> /hr 120 m <sup>3</sup> /hr
Truck Mixers	Mercedes Trucks Liebherr & Stetter Drums	<ol style="list-style-type: none"> <li>1. 20 Trucks, 3<sup>rd</sup> Settlement.</li> <li>2. 10 Trucks, Ain El – Sukhna.</li> <li>3. 10 Trucks, Beni Suef.</li> <li>4. 5 Trucks, Shorouk.</li> <li>5. 13 Trucks, 6<sup>th</sup> of October.</li> </ol>	
Pumps	Schwing and Putzmeister Mobile Pumps	<ol style="list-style-type: none"> <li>1. 1 Pump (36m).</li> <li>2. 3 Pumps (42m).</li> <li>3. 1 Pump (49m).</li> <li>4. 1 Pump (56 m).</li> <li>5. 1 Stationary Pump.</li> </ol>	3 <sup>rd</sup> Settlement
Pumps	Schwing and Putzmeister Mobile Pumps	<ol style="list-style-type: none"> <li>1. 1 Pump (36m).</li> <li>2. 1 Pump (42m).</li> </ol>	Ain El - Sukhna
Pumps	Schwing and Putzmeister Mobile Pumps	<ol style="list-style-type: none"> <li>1. 1 Pump (36m).</li> <li>2. 1 Pump (42m).</li> </ol>	Beni Suef
Pumps	Schwing and Putzmeister Mobile Pumps	<ol style="list-style-type: none"> <li>1. 1 Pump (36m).</li> <li>2. 1 Pump (42m).</li> </ol>	Shorouk

Pumps	Schwing and Putzmeister Mobile Pumps	1. 1 Pump (36m). 2. 1 Pump (42m). 3. 1 Pump (47m).	6 <sup>th</sup> of October
Loaders	CAT 966 H	2 Loaders	3 <sup>rd</sup> Settlement
Loaders	Komatsu 320	1 Loader	Ain El Sukhna
Loaders	CAT 950 H	1 Loader	Beni Suef
Loaders	Komatsu 320	1 Loaders	Shorouk
Loaders	Volvo L120	1 Loaders	6 <sup>th</sup> of October
Generators	2 CAT 1 Cummins	3 Generators, 3 <sup>rd</sup> Settlement	1*1000 KVA 1*500 KVA 1*150 KVA
Generators	CAT	1 Generators, Ain El Sukhna	1*500 Spear KVA
Generators	Cummins	2 Generators, Beni Suef	2*500 KVA
Generators	CAT	1 Generators, Shorouk	2*500 KVA
Generators	IVECO Cummins	2 Generators, 6 <sup>th</sup> of October	2*500 KVA
Chiller	Epsi	Temp reaches 2°C, 3 <sup>rd</sup> Settlement	140 RT
Chiller	Epsi	Temp reaches 2°C, Ain El Sukhna	105 RT
Chiller	Epsi	Temp reaches 2°C, Beni Suef	140 RT

Chiller	Epsi	Temp reaches 2°C, 6 <sup>th</sup> of October	140 RT
Water Tanks	Underground Tanks + PP Tanks	3 <sup>rd</sup> Settlement	520 m <sup>3</sup>
Water Tanks	Underground Tanks + PP Tanks	Ain El Sukhna	400 m <sup>3</sup>
Water Tanks	PP Tanks	Beni Suef	800 m <sup>3</sup>
Water Tanks	PP Tanks	Shorouk	150 m <sup>3</sup>
Water Tanks	Underground Tanks + PP Tanks	6 <sup>th</sup> of October	600 m <sup>3</sup>
Silos	7 Cement Silos	150 Tons/silo in 3 <sup>rd</sup> Settlement Batching Plant	Total – 1050
Silos	8 Cement Silos	150 Tons/silo in Ain El Sukhna Batching Plant	Total – 600
Silos	8 Cement Silos	150 Tons/silo in Beni Suef Batching Plant	Total – 1200
Silos	3 Cement Silos	150 Tons/silo in Shorouk Batching Plant	Total – 450
Silos	8 Cement Silos	150 Tons/silo in 6 <sup>th</sup> of October Batching Plant	Total – 1200
Agg.Washing Machine		Currently present in 3 <sup>rd</sup> Settlement, Batching Plant	2000 m3
Agg.Washing Machine		Currently present in Ein El Sukhna, Batching Plant	2000 m3
Agg.Washing Machine		Currently present in Beni Suef, Batching Plant	2000 m3
Agg.Washing Machine		Currently present in Shorouk, Batching Plant	1000 m3

Quality Control Division  
Central Lab

قسم مراقبة الجودة  
المعمل المركزي

إذن تسليم خرسانة رقم ( )

Batch Plant: ----- محطة خلط: -----  
Date: ----- التاريخ: -----/-----/-----  
Client: ----- العميل: -----  
Project: ----- الموقع: -----  
Code No: ----- رقم كود الخلطة: -----  
Required compressive strengths: ----- مقاومة الضغط المطلوبة: -----  
Composition per m3: ----- مكونات المتر المكعب الواحد: -----

CEMENT + Type (KG)	الأسمنت ونوعه (كجم)
WATER (KG)	المياه (كجم)
SAND (KG)	الرمال (كجم)
AGGREGATE 1 (KG)	سن 1 (كجم)
AGGREGATES 2(KG)	سن 2 (كجم)
ADMIXTURE 1(KG)	الإضافات 1 (كجم)
ADMIXTURE 2 (KG)	الإضافات 2 (كجم)

Driver name	إسم السائق	Method of casting	طريقة الصب
Truck no.	رقم السيارة	Arriving time	وقت الوصول
Qty.(m3)	حمولة السيارة م3	Start of casting	بداية الصب
B.P Departure	وقت الخروج	Site Departure	وقت مغادرة الموقع
Total qty. (m3)	الكمية الإجمالية م3	Cumulative qty. (m3)	الكمية السابقة م3
	مشغل المحطة:		مشغل المضخة:

ملحوظات هامة :

- 1- لا يسمح بأى تغيير فى تصميم الخلطة الخرسانية و خاصة إضافة المياه .
- 2- تعتمد النتيجة النهائية على طريقة الصب و الدمك و المعالجة .
- 3- يتم تفريغ الحمولة فى مدة اقصاها 4 دقائق/ م3.

مدير المحطة :

- تم استلام الكمية المذكورة عاليه و هى مطابقة للمواصفات و هى بصفة أمانة حتى يتم سداد قيمة الخرسانة الموردة .

المستلم : الاسم: ..... المهنة : ..... التوقيع : .....



# QUALITY PLAN

 **EL SEWEDY**  
READY MIX **2021**

## 1. RECEIVING OF RAW MATERIALS

THE QUALITY CONTROL STARTS FROM THE FIRST PRODUCTION STEP, OR THE RECEIVING OF RAW MATERIALS, SRM ON SITE LABORATORY STAFF IS RESPONSIBLE FOR RECEIVING RAW MATERIALS, AND WILL INSURE THAT THESE MATERIALS COMPLY WITH THE REQUIREMENTS OF SRM QUALITY ROLES. THE LABORATORY STAFF REPORTS TO THE QUALITY CONTROL ENGINEER AND FOLLOW THE FOLLOWING PROCEDURE:

1ST: AS THE SHIPMENT OF RAW MATERIALS REACHES SRM'S SITE IT MUST STAY OUTSIDE THE PRODUCTION YARD, TO BE CHECKED AND INSPECTED AND THE LABORATORY ENGINEER IS NOTIFIED.

2ND: BEFORE RECEIVING THE RAW MATERIALS, THE RESPONSIBLE ENGINEER WILL FILL THE RECEIVING LOGS FOR THE SPECIFIED MATERIAL, AND WILL INSPECT IT AGAINST SHIPPING DOCUMENT.

3RD: ONCE THE RAW MATERIAL IS DEEMED IN COMPLIANCE WITH THE REQUIREMENT, THE RESPONSIBLE ENGINEER WILL APPROVE THE MATERIALS TO BE RECEIVED. THE RECEIVING CLERK WILL ARRANGE THE UNLOADING OF THE TRUCK IN A WAY THAT DOESN'T INTERRUPT PRODUCTION WHILE OBSERVING THE SAFETY PROCEDURES.

4TH: SHOULD THE MATERIALS SHOW QUESTIONABLE QUALITY CHARACTERISTICS, THE ENGINEER WILL RECOMMEND PERFORMING ADDITIONAL TESTING. MATERIAL UNDER REVIEW WILL BE STORED SEPARATELY UNTIL A FINAL DEPOSITION BY THE ENGINEER IS DELIVERED.

5TH: SHOULD THE RAW MATERIAL FAIL TO COMPLY WITH THE REQUIRED

## 2. STORAGE OF RAW MATERIALS

THE RAW MATERIALS ARE STORED IN PROPER AREAS, DESIGNED TO PROTECT THE SPECIFIC TYPES IN STORAGE, SUCH AS:

### A. AGGREGATE & SAND

AGGREGATE AND SAND ARE STORED IN BIG STORES SEPARATED FROM EACH OTHER WITH CLEAR HARD WALL PARTITIONS, SEGREGATING EACH SIZE AND TYPE.

### B. CEMENT

CEMENT IS STORED IN SILOS OF 150 TONS CAPACITY EACH PAINTED IN LIGHT COLOR WITH CEMENT FILTERS & LEVEL INDICATORS TO PROTECT THE ENVIRONMENT.



## C. WATER

CLEAN SWEET WATER IS STORED IN INSULATED TANKS WITH CAPACITY NOT LESS THAN 400,000 LT.

## D. CHEMICALS

ALL ADMIXTURES AND OTHER TYPES OF CHEMICALS ARE STORED IN INSULATED TANKS, IN A SHADED AREA DELIVERED USING CIRCULATION PUMPS, PREVENTING ELECTRO-DEPOSIT OF CHEMICAL COMPONENTS.

## 3. MATERIALS TESTING

ALL MATERIALS RECEIVED BY SRM, WILL BE SUBJECTED TO QUALITY CONTROL USING BOTH IN-HOUSE LABORATORY TESTING AS WELL AS INDEPENDENT TESTING VERIFICATIONS:

### A. THE IN-HOUSE TESTING PROGRAM

PERIODIC TESTS ARE PERFORMED RANGING BETWEEN DAILY TO MONTHLY, INCLUDING THE MOST COMMON AND ESSENTIAL TESTS, SUCH AS MOISTURE CONTENT, SIEVE ANALYSIS, FLAKINESS, ELONGATION, SLUMP, CUBES, RECORDS OF TEMPERATURE AND OTHERS AS REQUIRED.

### B. THE INDEPENDENT TESTING PROGRAM

AN INDEPENDENT AND QUALIFIED LABORATORY WILL BE USED TO PERFORM ALL TESTS OUTSIDE THE CAPABILITY OF THE IN-HOUSE LABORATORY SUCH AS ALL CHEMICAL BASE TESTING. PERIODIC VALIDATION AND CALIBRATION TESTING WILL ALSO BE PERFORMED BY AN OUTSIDE AND INDEPENDENT LABORATORY

## 4. BATCHING PLANT OPERATIONS

BATCH PLANT OPERATOR IS RESPONSIBLE FOR IMPLEMENTING THE BATCH PLANT OPERATIONAL PROCEDURES THAT INCLUDE PROPER LINE CLEARANCE BETWEEN DIFFERENT DESIGN MIXES, EQUIPMENT AND LINE CLEANING, RESETTING OF ALL WEIGHT SYSTEMS TO ZERO, CHECKING HYDRAULIC OILS, ELECTRIC BREAKERS AND THE DAILY CLEANING OF THE INSIDE OF THE MIXER.

ANY OBSERVED DEVIATIONS OR POSSIBLE BREAKDOWNS WILL BE COMMUNICATED TO THE PRODUCTION MANAGER IMMEDIATELY FOR PROPER ACTION.

THE PLANT OPERATOR IS NOT ALLOWED TO PRODUCE ANY TYPE OF CONCRETE UNLESS HE HAS AN APPROVED MIX DESIGN FROM THE QUALITY CONTROL ENGINEER, AND AFTER THE MIX DESIGN IS INSTALLED IN THE COMPUTER SYSTEM ALONG WITH THE PARTICULAR CONTRACTOR AND PROJECT DESIGNATION.

THE BATCH PLANT WEIGHING SYSTEMS INCLUDING (AGGREGATE, SAND, CEMENT, WATER & ADMIXTURES) MUST BE CALIBRATED EVERY SIX MONTHS AT A MINIMUM, OR AFTER ANY RELATED REPAIRS THAT CAN POSSIBLY IMPAIR THE PROPER FUNCTIONING OF THE SCALES.

THE PLANT OPERATOR IS ALSO RESPONSIBLE FOR KEEPING A DAILY LOG OF ALL PRODUCTION AND ITS RELATED PROJECT AND CUSTOMER DESIGNATION IN A LOG BOOK OR ELECTRONICALLY.

#### **5. STORAGE AND TEMPERATURE CONTROL**

IN ORDER TO ALLEVIATE THE POTENTIAL PROBLEM OF THE HEAT OF THE SUMMER AND ITS EFFECT ON THE CONCRETE TEMPERATURE AND ITS CHARACTERISTICS, THE FOLLOWING PREVENTATIVE MEASURES ARE TAKEN:

- A. SAND IS STORED IN A SHADED AREA PROTECTED FROM THE SIDES AND TOP PREVENTING DIRECT SUN HEAT.
- B. CEMENT SILOS ARE PAINTED LIGHT COLORS TO HELP DECREASE HEAT ABSORPTION.
- C. THE ADMIXTURES AND CHEMICALS ARE STORED IN TANKS UNDER A SHADED AREA.
- D. WHEN THE TEMPERATURE IS EXTREMELY HIGH AND THE CONCRETE TEMPERATURE REQUIRES

TEMPERATURE CONTROL, ONE CHILLER IS AVAILABLE ON SITE TO COOL OFF THE WATER USED TO MANUFACTURE THE CONCRETE. SHOULD THE CHILLER BE OUT OF ORDER OR INSUFFICIENT, ICE FLAKES CAN BE USED TO THE SAME END.

#### **6. MANUFACTURED CONCRETE**

ALL PRODUCED READY MIX CONCRETE WILL BE CHECKED AND VERIFIED AT THE PLANT FOR COMPLIANCE WITH CUSTOMER REQUIREMENTS BY THE SITE TECHNICIAN. THE FOLLOWING CHARACTERISTICS ARE CHECKED AT THE PLANT PRIOR TO THE CONCRETE LEAVING THE BATCH PLANT:

- A. INITIAL SLUMP
- B. INITIAL CONCRETE TEMPERATURE
- C. CUBE SAMPLE (AS REQUIRED FOR TESTS)

EACH DELIVERY OF CONCRETE TO THE CUSTOMER SITE WILL BE ACCOMPANIED BY A TECHNICIAN AND THE SAME CHARACTERISTICS ARE AGAIN CHECKED AT THE POINT OF DELIVERY AND A LOG IS KEPT WITH THE APPROPRIATE APPROVING SIGNATURES.

## **7. MIX DESIGN CONTROL**

A SPECIFIC MIX DESIGN IS DEVELOPED USING THE CUSTOMER SPECIFICATIONS.

1ST: THE FIRST STEP IN PREPARING THE MIX DESIGN IS STUDYING AND ANALYZING THE GENERAL AND SPECIAL SPECIFICATION OF THE CONCRETE REQUIRED FOR THE PARTICULAR JOB, SUCH AS:

- A. SOURCE AND CHARACTERISTICS OF CONCRETE RAW COMPONENTS.
- B. CHARACTERISTICS OF CONCRETE (STRENGTH, SLUMP...ETC).
- C. MINIMUM AND MAXIMUM CEMENT CONTENT.
- D. RANGE OF THE WATER/CEMENT RATIO.
- E. ANY OTHER SPECIAL CHEMICALS OR/AND REQUIREMENTS.

2ND: THE SECOND STAGE OF PREPARING THE MIX DESIGN IS TO TEST THE MAIN CHARACTERISTICS OF RAW MATERIALS USED IN THE "SPECIFIED MIX", WHICH MUST BE IN COMPLIANCE WITH THE LIMITS OF THE INTERNATIONAL AND/OR PROJECT STANDARDS, INCLUDING:

- A. SIEVE ANALYSIS OF FINE AND COARSE AGGREGATES.
- B. SPECIFIC GRAVITY AND WATER ABSORPTION.
- C. SULPHATE AND CHLORIDE CONTENT.
- D. ANY OTHER SPECIAL TESTS IF REQUIRED.

3RD: THE THIRD STAGE IS THE CALCULATIONS OF THE MATERIALS QUANTITIES REQUIRED IN ONE CUBIC METER OF CONCRETE REQUIRED TO MEET THE CUSTOMER SPECIFICATIONS.

4TH: THE FOURTH STAGE IS TO PERFORM A LABORATORY TRIAL MIX PERFORMED BY THE LABORATORY ENGINEER. SAMPLES WILL BE TESTED AS PER THE PROJECT SPECIFICATION, AND DATA RESULTS RECORDED UNTIL THE MIX DESIGN IS CONFIRMED.

5TH: THE FIFTH STAGE IS SUBMITTING THE MIX DESIGN TO THE CONSULTANT, TO ARRANGE A PLANT TRIAL MIX UNDER HIS SUPERVISION.

6TH: THE SIXTH AND FINAL STAGE IS TO DOCUMENT THE DESIGN MIX AND ALL THE TEST RESULTS OF ITS COMPONENTS AND THE FINAL SLUMP, COMPRESSIVE STRENGTH AND ANY OTHER CHARACTERISTIC REQUIRED.

**8. LABORATORY PROCEDURES**

THE LABORATORY WILL PRODUCE THE FOLLOWING:

**A. TESTING**

THE TESTING PROGRAM INCLUDES TWO MAIN PARTS, THE IN HOUSE TESTING PROGRAM AND THE INDEPENDENT TESTING PROGRAM. ALL TESTS RESULTS ARE RECORDED IN PROPER LOG BOOKS AND DATE AND PERIODIC TESTING ARE OBSERVED CONSISTENTLY AND RECORDS ARE KEPT SAFELY.

**B. TEST REPORTS**

ALL TESTS PERFORMED IN THE COMPANY LABORATORY ARE WRITTEN IN SUMMARY FORMAT, IN SIMPLE AND CLEAR BULLET POINTS EASILY ACCESSIBLE AND LEGIBLE BY THE TECHNICIANS WORKING IN THE LABORATORY.

**C. TRAINING**

REGULAR TRAINING PROGRAMS FOR THE COMPANY TECHNICIANS ARE PERFORMED AND A WIDE STAFF AWARENESS PROGRAM CONTINUOUSLY EXPOSE ALL PLANT STAFF TO THE OPERATIONAL AND TEST REQUIREMENTS OF THE CONCRETE INDUSTRY.

**D. CALIBRATION**

ALL THE EQUIPMENT AND TOOLS USED IN THE LABORATORY FOR TESTING AND MEASURING MUST BE CALIBRATED YEARLY OR MORE FREQUENTLY BASED ON PARTICULAR NEEDS.

**E. INTERNATIONAL STANDARDS AND REFERENCE**

ALL TESTS AND METHODS ARE IN COMPLIANCE WITH THE ASTM STANDARDS AND A COPY IS ALWAYS AVAILABLE AT THE LABORATORY FOR REFERENCE.

**8. LABORATORY PROCEDURES**

A. THE CUSTOMER SCHEDULES ARE THE MAIN DRIVERS IN DEVELOPING THE ORDER FOR DELIVERIES. DELIVERY DISPATCHING ENSURES THE INTEGRITY OF THE TIMING BETWEEN PRODUCTION AND DELIVERY OF THE CONCRETE AS THIS IS A CRUCIAL AND MOST IMPORTANT FACTOR AFFECTING THE QUALITY AND COMPLIANCE OF THE CONCRETE.

B. STRICT COORDINATION WITH THE CUSTOMER SITE IS DONE TO ENSURE PROPER TIMING AND RECEIPT OF THE CONCRETE AT THE CUSTOMER SITE. ALL DELIVERIES INCLUDE THE APPROVAL OF THE CUSTOMER IN THE FORM OF A SIGNATURE ON THE DELIVERY TICKET.

C. THE DELIVERY TICKET OF THE CONCRETE CONTAINS ALL THE DETAILED INFORMATION REGARDING THE CONTENT OF THE DELIVERY AND THE COMPONENT OF THE DESIGN MIX AND INCLUDE THE CUSTOMER NAME, PROJECT NAME, CONCRETE MIX DESIGN, TIME OF BATCHING, TRUCK DRIVER IDENTIFICATIONS, TIME OF DISCHARGING, PLANT AND SITE CHECKING, SIGNATURE OF THE SHIPPING CLERK AND QUALITY INSPECTOR.

## **10. MAINTENANCE**

SRM RETAINS A FULL TIME MECHANIC AND ELECTRICIAN ON BOARD TO ENSURE:

### **A. REGULAR PREVENTATIVE MONITORING**

(DAILY – WEEKLY – MONTHLY) ROUTINE INSPECTIONS AND MAINTENANCE ARE PERFORMED FOR ALL EQUIPMENT USED IN THE PRODUCTION OF READY MIX CONCRETE. IN ADDITION TO THE ONSITE MECHANIC, EACH EQUIPMENT OPERATOR IS MADE TO CARE FOR HIS EQUIPMENT AND KEEP THEM CLEAN AND OPERATIONAL AT ALL TIMES AND TO REPORT ANY HAZARD OR BREAKDOWNS IMMEDIATELY FOR REPAIRS.

- BATCHING PLANTS.
- TRUCK MIXERS.
- CONCRETE PUMPS.

### **B. BREAKDOWN RECORDS**

A FULL HISTORY OF MAINTENANCE RECORDS IS KEPT FOR ALL THE EQUIPMENT. MANAGEMENT CONTINUOUSLY CHECKS AND ANALYZES THE BREAKDOWN OF EACH EQUIPMENT, AND PLANS FOR PREVENTION FIRST AND QUICK RESPONSE TO BREAKDOWNS.

### **C. STANDBY EQUIPMENTS**

IN MOST CASES SRM TRIES TO ELIMINATE THE SINGLE POINTS OF FAILURE BY MAKING AVAILABLE DUPLICATION OF EQUIPMENT AND TOOLING. THE GOAL IS TO MINIMIZE ANY DOWNTIME ARISING FROM UNEXPECTED BREAKDOWNS. SRM MAINTAINS A SUBSTANTIAL LIST OF SPARE PARTS ON THE READY FOR REPAIRS.



Quality Control Division

Central Lab

قسم مراقبة الجودة

المعمل المركزي

## تقرير متابعة الصب بالموقع

اسم المحطة : \_\_\_\_\_ : رقم الكود : \_\_\_\_\_  
العميل : \_\_\_\_\_ : المشروع : \_\_\_\_\_  
رقم الكود للعميل : \_\_\_\_\_ : رقم الكود للخلطة : \_\_\_\_\_  
طريقة الصب : \_\_\_\_\_ : عنصر الصب : \_\_\_\_\_  
تاريخ الصب : \_\_\_\_\_ : مشغل المضخة : \_\_\_\_\_

م	رقم السيارة	اسم السائق	الكمية م <sup>3</sup>	وقت الوصول	الهبوط cm	الحرارة °C	عدد العينات	اضافات بالموقع	وقت المغادرة	ملاحظات

رئيس القسم

مدير مراقبة الجودة

فنى المعمل

Quality Control Division  
Central Lab

قسم مراقبة الجودة  
المعمل المركزي

تقرير متابعة الصب بالمحطة

اسم المحطة : \_\_\_\_\_  
العميل : \_\_\_\_\_  
رقم الكود للعميل : \_\_\_\_\_  
فنى التشغيل : \_\_\_\_\_  
تاريخ الصب : \_\_\_\_\_

رقم الكود : \_\_\_\_\_  
المشروع : \_\_\_\_\_  
رقم الكود للمحطة : \_\_\_\_\_  
فنى المعمل : \_\_\_\_\_

ملاحظات	وقت الخروج	اضافات يدويا	عدد العينات	الحرارة °C	الهبوط cm	وقت التحميل	الكمية م <sup>3</sup>	اسم السائق	رقم السيارة	م

رئيس القسم

مدير مراقبة الجودة

فنى المعمل



Quality Control Division  
Central Lab

قسم مراقبة الجودة  
المعمل المركزى

إذن تسليم خرسانة رقم ( )

Batch Plant: ----- محطة خلط: -----  
Date: ----- التاريخ: -----/-----/-----  
Client: ----- العميل: -----  
Project: ----- الموقع: -----  
Code No: ----- رقم كود الخلطة: -----  
Required compressive strengths: ----- مقاومة الضغط المطلوبة: -----  
Composition per m3: ----- مكونات المتر المكعب الواحد: -----

CEMENT + Type (KG)	الأسمنت ونوعه (كجم)
WATER (KG)	المياه (كجم)
SAND (KG)	الرمال (كجم)
AGGREGATE 1 (KG)	سن 1 (كجم)
AGGREGATES 2(KG)	سن 2 (كجم)
ADMIXTURE 1(KG)	الإضافات 1 (كجم)
ADMIXTURE 2 (KG)	الإضافات 2 (كجم)

Driver name	إسم السائق	Method of casting	طريقة الصب
Truck no.	رقم السيارة	Arriving time	وقت الوصول
Qty.(m3)	حمولة السيارة م3	Start of casting	بداية الصب
B.P Departure	وقت الخروج	Site Departure	وقت مغادرة الموقع
Total qty. (m3)	الكمية الإجمالية م3	Cumulative qty. (m3)	الكمية السابقة م3
	مشغل المحطة:		مشغل المضخة:

ملحوظات هامة :

- 1- لا يسمح بأى تغيير فى تصميم الخلطة الخرسانية و خاصة إضافة المياه .
- 2- تعتمد النتيجة النهائية على طريقة الصب و الدمك و المعالجة .
- 3- يتم تفريغ الحمولة فى مدة اقصاها 4 دقائق/ م3.

مدير المحطة :

- تم استلام الكمية المذكورة عاليه و هى مطابقة للمواصفات و هى بصفة أمانة حتى يتم سداد قيمة الخرسانة الموردة .

المستلم : الاسم: ..... المهنة : ..... التوقيع : .....



# MATERIALS INSPECTION PLAN

 **EL SEWEDY**  
READY MIX **2021**

## A. Materials Test

## 1. Aggregate Tests

No.	Test Type	Specifications	Repetition
1	Sieve analysis for coarse and fine Agg.	ASTMC136	When the source changes, every 3 days & with new mix design
2	Material finer than sieve (200) in mineral Agg.	ASTMC117	When the source changes & every week
3	Clay Lumps & friable in Agg.	ASTMC142	When the source changes & every week
4	Organic impurities in fine Agg.	ASTMC40	When the source changes & every week
5	Density, specific gravity & absorption of fine Agg.	ASTMC128	When the source changes & every week
6	Density, specific gravity & absorption of coarse Agg.	ASTMC127	When the source changes & every week
7	Bulk density & voids in Agg.	ASTMC29	When the source changes & every week
8	Resistance to degradation of small size coarse by abrasion & impact in Los Angeles machine	ASTMA131	When the source changes & every week
9	Soundness of Agg. by using Na & MG Sulfate	ASTMA88	When the source changes & every week
10	Chlorides Content in Agg.	Egyptian code 3 <sup>rd</sup> unit, part 2-22	When the source changes & every week
11	Sulfates Content in Agg.	Egyptian code 3 <sup>rd</sup> unit, part 2-22	When the source changes & every week

القطعة 236 , منطقة الصناعات الكيماوية, المنطقة الصناعية, التجمع الثالث, القاهرة الجديدة, القاهرة , مصر

Plot 236, Chemical Industrial Zone, Industrial Zone, 3<sup>rd</sup> Settlement, New Cairo, Cairo, Egypt

Tel: [01021044924](tel:01021044924)

Email: [readymix@elsewedy-ind.com](mailto:readymix@elsewedy-ind.com)

## 2. Cement Tests

No.	Test Type	Specifications	Repetition
1	Initial and final Sitting Time (Vicat's Apparatus)	ES2421P1	For every day supply of one sample to the factory
2	Compressive strength of cement mortars	ES2421P7	For every day supply of one sample to the factory

## 3. Water Tests

No.	Test Type	Specifications	Repetition
1	Complete Chemical Analysis	Egyptian code 3 <sup>rd</sup> unit, part 3	When the source changes & every 3 months

## 4. Admixture Tests

No.	Test Type	Specifications	Repetition
1	Density of chemical admixtures	ASTM494	Every supply

القطة 236 , منطقة الصناعات الكيماوية, المنطقة الصناعية, التجمع الثالث, القاهرة الجديدة, القاهرة , مصر  
 Plot 236, Chemical Industrial Zone, Industrial Zone, 3<sup>rd</sup> Settlement, New Cairo, Cairo, Egypt

Tel: [01021044924](tel:01021044924)

Email: [readymix@elsewedy-ind.com](mailto:readymix@elsewedy-ind.com)

## B. Concrete Tests

## 1. Fresh Concrete

No.	Test Type	Specifications	Repetition
1	Determination of Slump Test	ES1658P2	On demand & with new Mix design
2	Temp. of freshly mixed concrete	ASTMC1064	On demand & with new Mix design
3	Unit weight and yield for fresh concrete	ASTMC138	On demand & with new Mix design
4	Air content by pressure method	ASTMC231	On demand & with new Mix design
5	Time of sitting by penetration method	ASTMC403	On demand & with new Mix design
6	Sampling of fresh concrete	ES1658P5	On demand & with new Mix design

## 2. Hardened Concrete

No.	Test Type	Specifications	Repetition
1	Determination of Compressive strength of Hardened concrete specimens	Egyptian Code unit 3, part 2-7	For the samples taken in exact age

القطعة 236 , منطقة الصناعات الكيماوية, المنطقة الصناعية, التجمع الثالث, القاهرة الجديدة, القاهرة , مصر  
Plot 236, Chemical Industrial Zone, Industrial Zone, 3<sup>rd</sup> Settlement, New Cairo, Cairo, Egypt

Tel: [01021044924](tel:01021044924)

Email: [readymix@elsewedy-ind.com](mailto:readymix@elsewedy-ind.com)



# HSE POLICY

 **EL SEWEDY** **2021**  
READY MIX



This policy is the basis upon which the Health and Safety activities of the company were founded. The company's objectives and methods are clearly stated, and apply to every aspect of business activities.

## General Statement on Health Safety and Environmental

At El Sewedy Ready Mix (SRM), we value the wellbeing of our employees, contractors, customers and the environment. We are committed to responsible management practices that minimize any adverse health, safety or environmental impacts arising from our activities or services. We have in place a Health, Safety and Environmental management system for all our activities that drives continual improvement.

The HSE Management System outlines HSE accountabilities to implement this Policy and requires that we:

- Identify and manage risks to as low as reasonably practicable where they have the potential to cause an accident, injury or illness to people, or unacceptable impacts on the environment or the community.
- Provide safe work places and systems of work, empower employees and contractors to address unsafe situations and carry out their work in a manner that does not present a risk to themselves, others or the environment.
- Support the recovery and rehabilitation of employees in the event of work related injury or illness.
- Set objectives and targets which promote the efficient use of energy and resources, the minimization of wastes and emissions and the prevention of pollution.
- Ensure compliance with relevant HSE legal requirements and other commitments.
- Require contractors to manage HSE using standards and practice that accord with the policy.
- Regularly review and report HSE performance.

In implementing this Policy we will engage with our employees, contractors, suppliers, customers and Government.

## Accountabilities

The Board is responsible for establishing and over viewing the company's commitment to manage HSE in accordance with this policy and for monitoring the performance of the Company with respect to its implementation. The CEO is responsible for the implementation of the HSE Management System to ensure the commitments made in this Policy are being met.



**GAMMA**  
CONSTRUCTION

# MATERIALS TESTS

 **EL SEWEDY**  
READY MIX **2021**



Misr Raymond Foundations  
S.A.E



شركة مصر ريموند للأساسات  
ش.م.م

20, Haroun St. Dokki, GIZA - Arab Republic Of Egypt  
Phone: (+202) 37485199 - 37488164 - 37492276 - 33368891  
Fax : (+202) 37486253  
E-mail: misraymond@osmangroup.net

٢٠ شارع مارون - الدقي - الجيزة ج.م.ع  
تليفون : ٣٣٣٦٨٨٩١ - ٣٧٤٩٢٢٧٦ - ٣٧٤٨٨١٦٤ - ٣٧٤٨٥١٩٩  
فاكس : ٣٧٤٨٦٢٥٣

## GRAIN SIZE DISTRIBUTION

Date: 19/2/2020

Client : El Sweedy Ready Mix

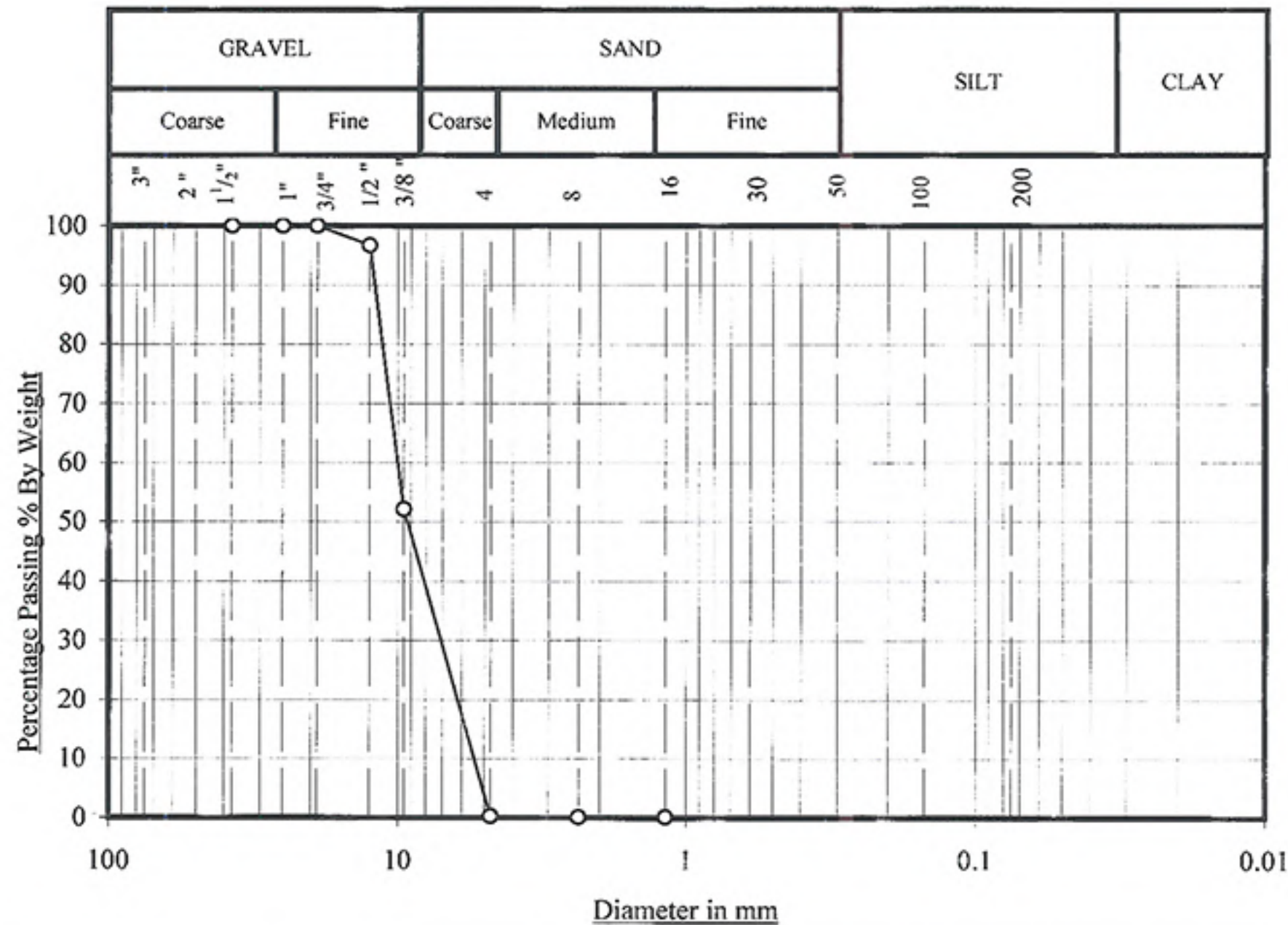
Plant Location :

Source: Al Galala

Sample taken by : The client

Delivery Date : 16/2/2020

Dolomite Size # 1



Sieve No.	1 1/2 "	1 "	3/4 "	1/2 "	3/8 "	4	8	16		% pass
Sieve size (mm)	37.5	25	19.0	12.5	9.5	4.75	2.36	1.18		200
% Passing	100.0	100.0	100.0	96.7	52.1	0.3	0.1	0.1		0.5
Limits										

Remarks :

Tested By

Checked By :

Misr Raymond Foundations

Misr Raymond Foundations  
S.A.E



شركة مصر ريموند للأساسات  
ش.م.م

20, Haroun St. Dokki, GIZA - Arab Republic Of Egypt  
Phone: (+202) 37485199 - 37488164 - 37492276 - 33368891  
Fax : (+202) 37486253  
E-mail: misraymond@osmangroup.net

٢٠ شارع هارون - الدقي - الجيزة - ج.م.ع  
تليفون : ٣٣٣٦٨٨٩١ - ٣٧٤٩٢٢٧٦ - ٣٧٤٨٨١٦٤ - ٣٧٤٨٥١٩٩  
فاكس : ٣٧٤٨٦٢٥٣

## SPECIFIC GRAVITY AND ABSORPTION

ASTM C 127

Date : 19/02/2020  
Client : El Sweedy Cement  
Plant Location :  
Client Reference : Q 2148  
Delivery Date : 16/02/2020  
Source : Al Galala  
Sample Taken by : The Client

<u>Type and Size of Aggregate</u>	<u>Specific Gravity ( S.S.D. )</u>	<u>Absorption ( % )</u>
Dolomite Size # 1	2.621	2.2

Remarks :

Tested By :

Checked By :

Misr Raymond Fo Eng/Ashraf A.Zaki  
  
معمل اختبار المواد

Misr Raymond Foundations

S.A.E

شركة مصر ريموند للأساسات  
ش.م.م

20, Haroun St. Dokki, GIZA - Arab Republic Of Egypt  
 Phone: (+202) 37485199 - 37488164 - 37492276 - 33366891  
 Fax : (+202) 37486253  
 E-mail: misraymond@osmangroup.net

٢٠ شارع مارون - الدقى - الجيزة ج.م.ع  
 تليفون : ٣٣٣٦٨٨٩١ - ٣٧٤٩٢٢٧٦ - ٣٧٤٨٨١٦٤ - ٣٧٤٨٥١٩٩  
 فاكس : ٣٧٤٨٦٢٥٣

### UNIT WEIGHT & VOIDS IN AGGREGATE

Date : 19/02/2020  
 Client : El Sweedy Cement  
 Plant Location :  
 Client Reference : Q 2148  
 Delivery Date : 16/02/2020  
 Source : Al Galala  
 Sample Taken by : The Client

<u>Type and Size of Aggregate</u>	<u>Rodded Unit Wt. -T/m3</u>
Dolomite Size # 1	1.497

Remarks :

Checked By :



Eng.Ashraf A.Zaki

Misr Raymond Foundations  
S.A.E



شركة مصر ريموند للأساسات  
ش.م.ع

20, Haroun St. Dokki, GIZA - Arab Republic Of Egypt  
Phone: (+202) 37485199 - 37488164 - 37492276 - 33368891  
Fax : (+202) 37486253  
E-mail: misraymond@osmangroup.net

٢٠ شارع هارون - الدقي - الجيزة - ج.م.ع  
تليفون : ٣٣٣٦٨٨٩١ - ٣٧٤٩٢٢٧٦ - ٣٧٤٨٨١٦٤ - ٣٧٤٨٥١٩٩  
فاكس : ٣٧٤٨٦٢٥٣

**RESISTANCE TO ABRASION OF COARSE  
AGGREGATE BY THE USE OF  
LOS ANGELES MACHINE  
ASTM C 131**

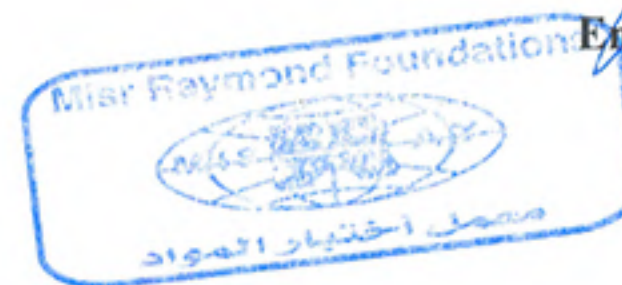
Date : 19/02/2020  
Client : El Sweedy Cement  
Plant Location :  
Client Reference : Q 2148  
Delivery Date : 16/02/2020  
Source : Al Galala  
Sample Taken by : The Client

<u>Type and Size of Aggregate</u>	<u>Grading Used</u>	<u>% of Wear</u>
Dolomite size # 1	C	22.0
Limits MAX		50.0

**Remarks :**

Checked By :

Eng.Ashraf A.Zaki



Misr Raymond Foundations  
S.A.E



شركة مصر ريموند للأساسات  
ش.م.ع

20, Haroun St. Dokki, GIZA - Arab Republic Of Egypt  
Phone: (+202) 37485199 - 37488164 - 37492276 - 33368891  
Fax : (+202) 37486253  
E-mail: misraymond@osmangroup.net

٢٠ شارع هارون - الدقي - الجيزة - ج.م.ع  
تليفون : ٣٣٣٦٨٨٩١ - ٣٧٤٩٢٢٧٦ - ٣٧٤٨٨١٦٤ - ٣٧٤٨٥١٩٩  
فاكس : ٣٧٤٨٦٢٥٣

**CLAY LUMPS AND FRIABLE PARTICLES**  
**OF AGGREGATE**

ASTM C 142

ASTM C 33

Date : 19/02/2020  
Client : El Sweedy Cement  
Plant Location :  
Client Reference : Q 2148  
Delivery Date : 16/02/2020  
Source : Al Galala  
Sample Taken by : The Client

<u>Type and Size of Aggregate</u>	<u>Clay Lumps and Friable Particles ( % )</u>
Dolomite Size # 1	0.9
Limits Max.	3.0

Remarks :

Tested By :

Checked By :

Eng. Ashraf A. Zaki



Misr Raymond Foundations  
S.A.E



شركة مصر ريموند للأساسات  
ش.م.م

20, Haroun St. Dokki, GIZA - Arab Republic Of Egypt  
Phone: (+202) 37485199 - 37488164 - 37492276 - 33368891  
Fax : (+202) 37486253  
E-mail: misraymond@osmangroup.net

٢٠ شارع هارون - الدقى - الجيزة ج. م. ع  
تليفون : ٣٣٣٦٨٨٩١ - ٣٧٤٩٢٢٧٦ - ٣٧٤٨٨١٦٤ - ٣٧٤٨٥١٩٩  
فاكس : ٣٧٤٨٦٢٥٣

## ELONGATION AND FLAKINESS OF AGGREGATE

BS 812

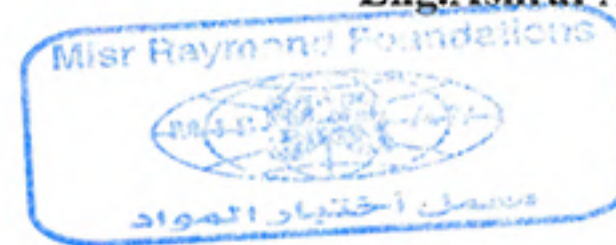
Date : 19/02/2020  
Client : El Sweedy Cement  
Plant Location :  
Client Reference : Q 2148  
Delivery Date : 16/02/2020  
Source : Al Galala  
Sample Taken by : The Client

<u>Type and Size of Aggregate</u>	<u>Elongation Index %</u>	<u>Flakiness Index %</u>
Dolomite Size # 2	11.8	20.9
Limits MAX	25.0	25.0

Remarks :

Checked By :

Eng. Ashraf A. Zaki



Misr Raymond Foundations  
S.A.E



شركة مصر ريموند للأساسات  
ش.م.ع

20, Haroun St. Dokki, GIZA - Arab Republic Of Egypt  
Phone: (+202) 37485199 - 37488164 - 37492276 - 33368891  
Fax : (+202) 37486253  
E-mail: misraymond@osmangroup.net

٢٠ شارع هارون - الدقى - الجيزة - ج.م.ع  
تليفون : ٣٣٣٦٨٨٩١ - ٣٧٤٩٢٢٧٦ - ٣٧٤٨٨١٦٤ - ٣٧٤٨٥١٩٩  
فاكس : ٣٧٤٨٦٢٥٣

### AGGREGATE CRUSHING VALUE

BS 812 - Part 110

Date : 19/02/2020  
Client : El Sweedy Cement  
Plant Location :  
Client Reference : Q 2148  
Delivery Date : 16/02/2020  
Source : Al Galala  
Sample Taken by : The Client

<u>Type and Size of Aggregate</u>	<u>CRUSHING VALUE ( % )</u>
Dolomite size # 2	20.3

Remarks :

Checked By :

Misr Raymond Foundations  
Eng. Ashraf A. Zaki  
معمل اختبار المواد

Misr Raymond Foundations  
S.A.E



شركة مصر ريموند للأساسات  
ش.م.ع

20, Haroun St. Dokki, GIZA - Arab Republic Of Egypt  
Phone: (+202) 37485199 - 37488164 - 37492276 - 33368891  
Fax : (+202) 37486253  
E-mail: misraymond@osmangroup.net

٢٠ شارع هارون - الدقي - الجيزة - ج.م.ع  
تليفون : ٣٣٣٦٨٨٩١ - ٣٧٤٩٢٢٧٦ - ٣٧٤٨٨١٦٤ - ٣٧٤٨٥١٩٩  
فاكس : ٣٧٤٨٦٢٥٣

## AGGREGATE IMPACT VALUE

BS 812 - Part 112

Date : 19/02/2020  
Client : El Sweedy Cement  
Plant Location :  
Client Reference : Q 2148  
Delivery Date : 16/02/2020  
Source : Al Galala  
Sample Taken by : The Client

<u>Type and Size of Aggregate</u>	<u>IMPACT VALUE ( % )</u>
Dolomite size # 2	6.9

Remarks :

Checked By :

Eng. Ashraf A. Zaki





Misr Raymond Foundations  
S.A.E



شركة مصر ريموند للأساسات  
ش.م.ع

20, Haroun St. Dokki, GIZA - Arab Republic Of Egypt  
Phone: (+202) 37485199 - 37488164 - 37492276 - 33368891  
Fax : (+202) 37486253  
E-mail: misraymond@osmangroup.net

٢٠ شارع هارون - اندقى - الجيزة ج.م.ع  
تليفون : ٣٣٣٦٨٨٩١ - ٣٧٤٩٢٢٧٦ - ٣٧٤٨٨١٦٤ - ٣٧٤٨٥١٩٩  
فاكس : ٣٧٤٨٦٢٥٣

### CHLORIDE & SULPHATE IN COARSE AGGREGATE

BS 812 - Part 117 & 118

Date : 19/02/2020  
Client : El Sweedy Cement  
Plant Location :  
Client Reference : Q 2148  
Delivery Date : 16/02/2020  
Source : Al Galala  
Sample Taken by : The client

<u>Type and Size of Aggregate</u>	<u>Acid Soluble Sulphate</u>	<u>Chloride Content As</u>	<u>Chloride Content As</u>
	<u>SO<sub>3</sub>-</u>	<u>NaCl</u>	<u>Cl-</u>
Dolomite size # 1	0.27	0.037	0.022
Limits MAX	0.4		0.04

**Remarks :**

- 1- Acid soluble sulphate.
- 2- Chloride test was done without crushing.

Checked By:

Chemist Hanaa.M.Eid



Misr Raymond Foundations  
S.A.E

20 Haroun St. Dokki, GIZA - ArabRepublic Of Egypt  
Phone: (202)7485199 - 7488164 - 7492276 - 3368891  
Fax: (202)7486253



شركة مصر ريموند للأساسات  
ش.م.ع

٣٠ شارع هارون - الدقي - الجيزة - ج.م.ع  
تليفون ٣٣٦٨٨٩١ - ٧٤٩٢٢٧٦ - ٧٤٨٨١٦٤ - ٧٤٨٥١٩٩  
فاكس ٧٤٨٦٢٥٣

## SOUNDNESS OF COARSE AGGREGATE BY USE OF MAGNESIUM SULPHATE

( ASTM C 88 )

( ASTM C 33 )

Date : 24/02/2020  
Client : El Sewedy Ready Mix  
Location :  
Reference : Q 2148  
Del. Date : 18/02/2020  
Type of Aggregate : Dolomite size # 1  
Source : Al Galala

Sieve Size		Grading of Original Sample %	Wt. of Fraction Before Test gm.	% Passing De- signated Sieve After Test	Weighted % Loss
Passing	Retained				
63.0mm (2 1/2 in.)	50.0mm (2 in.)				
50.0mm (2 in.)	37.5mm (1 1/2 in.)				
37.5mm (1 1/2 in.)	25.0mm (1 in.)				
25.0mm (1 in.)	19.0mm (3/4 in.)				
19.0mm (3/4 in.)	12.5mm (1/2 in.)				
12.5mm (1/2 in.)	9.5mm (3/8 in.)	48.0	1000	0.8	0.38
9.5mm (3/8 in.)	4.75mm (No. 4)	51.9	300	2.3	1.21
4.75mm (No. 4)		0.1	---	2.3	0.00
Total		100.0			1.60

**Remarks :**

- \* No. of cycles : Five Cycles
- \* Solution used : Fresh Magnesium Sulphate .
- \* The sample complies with the requirements of ASTM C 33

**Limits :**

**Max. 18**

**Tested By :**

**Checked By :**

Eng. Ashraf A. Zaki



Misr Raymond Foundations

S.A.E

شركة مصر ريموند للأساسات  
ش.م.م

20 Haroun St. Dokki, GIZA - ArabRepublic Of Egypt  
Phone: (202)7485199 - 7488164 - 7492276 - 3368891  
Fax: (202)7486253

٢٠ شارع هارون - الدقي - الجيزة - ج.م.ع  
تليفون : ٣٣٦٨٨٩١ - ٧٤٩٢٢٧٦ - ٧٤٨٨١٦٤ - ٧٤٨٥١٩٩  
فاكس : ٧٤٨٦٢٥٣

**POTENTIAL ALKALI REACTIVITY OF**  
**AGGREGATES**  
**( Mortar-Bar Method )**  
**ASTM C - 1260**

Date : 05/03/2020  
Client : Al Sewedy Ready Mix  
Plant Location :  
Type of Aggregate : Dolomite  
Shape of Casting Mold : Prism  
Source of Aggregate : Al Galala

Delivery Date : 17/02/2020  
Sample No. : 1  
Client Reference :  
Type of Cement : Type I

**COMPOSITION OF MORTAR MIX PER BATCH :**

1. Water : 0.270 Liters.
2. Cement : 600 gm.
3. Coarse Aggregate : (Dolomite)
  - A) Size ( 2.36 - 4.74 mm.) 135 gm.
  - B) Size ( 1.18 - 2.36 mm.) 338 gm.
  - C) Size ( 0.60 - 1.18 mm.) 338 gm.
  - D) Size ( 0.30 - 0.60 mm.) 338 gm.
  - E) Size ( 0.15 - 0.30 mm.) 202 gm.

16 Days

Item	1	2	3	
Date of Casting	18/02/2020			
Date of Testing	05/03/2020			
Dimensions of Mold in mm.	25x25x250			
% Increase in Linear Dimension	0.024	0.018	0.017	
% Decrease in Linear Dimension	---	---	---	
Average	0.019			
Specification Limits ( Maximum )	0.080			

**Remarks :**

By comparing the above results to the specification limits; the specimen is considered innocuous & safe to be used in concrete works .

Tested By :

Checked By :



Misr Raymond Foundations  
S.A.E



شركة مصر ريموند للأساسات  
ش.م.م

20, Haroun St. Dokki, GIZA - Arab Republic Of Egypt  
Phone: (+202) 37485199 - 37488164 - 37492276 - 33368891  
Fax : (+202) 37486253  
E-mail: misraymond@osmangroup.net

٢٠ شارع هارون - الدقي - الجيزة ج.م.ع  
تليفون : ٣٣٣٦٨٨٩١ - ٣٧٤٩٢٢٧٦ - ٣٧٤٨٨١٦٤ - ٣٧٤٨٥١٩٩  
فاكس : ٣٧٤٨٦٢٥٣

## GRAIN SIZE DISTRIBUTION

ASTM C-33

Date: 19/2/2020

Client : El Sweedy Ready Mix

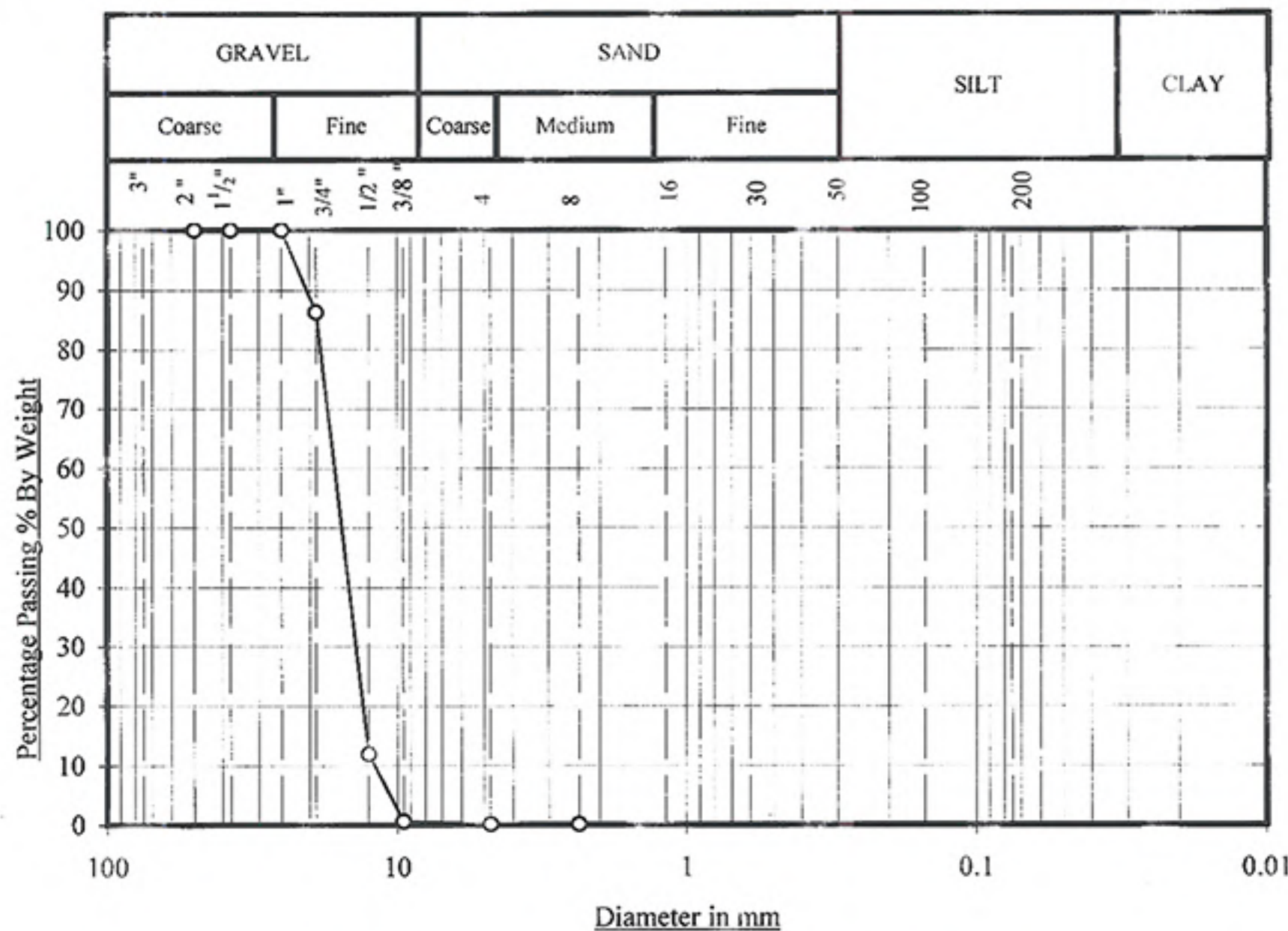
Plant Location :

Source: Al Galala

Sample taken by : The client

Delivery Date : 16/2/2020

Dolomite Size # 2



Sieve No.	2 "	1 1/2 "	1 "	3/4 "	1/2 "	3/8 "	4	8	16	% pass
Sieve size (mm)	50	37.5	25	19.0	12.5	9.5	4.75	2.36	1.18	200
% Passing	100.0	100.0	100.0	86.3	11.9	0.6	0.1	0.1		0.5
Limits										

Remarks :

Tested By

Checked By :  
Eng. Ashraf A.Zaki

Misr Raymond Foundations  
S.A.E



شركة مصر ريموند للأساسات  
ش.م.ع

20, Haroun St. Dokki, GIZA - Arab Republic Of Egypt  
Phone: (+202) 37485199 - 37488164 - 37492276 - 33368891  
Fax : (+202) 37486253  
E-mail: misraymond@osmangroup.net

٢٠ شارع هارون - الدقى - الجيزة - ج.م.ع  
تليفون : ٣٣٣٦٨٨٩١ - ٣٧٤٩٢٢٧٦ - ٣٧٤٨٨١٦٤ - ٣٧٤٨٥١٩٩  
فاكس : ٣٧٤٨٦٢٥٣

**SPECIFIC GRAVITY AND ABSORPTION**  
**ASTM C 127**

Date : 19/02/2020  
Client : El Sweedy Cement  
Plant Location :  
Client Reference : Q 2148  
Delivery Date : 16/02/2020  
Source : Al Galala  
Sample Taken by : The Client

<u>Type and Size of Aggregate</u>	<u>Specific Gravity ( S.S.D. )</u>	<u>Absorption ( % )</u>
Dolomite Size # 2	2.608	1.7

Remarks :

Tested By :

Checked By :



Eng.Ashraf A.Zaki

Misr Raymond Foundations  
S.A.E



شركة مصر ريموند للأساسات  
ش.م.ع

20, Haroun St. Dokki, GIZA - Arab Republic Of Egypt  
Phone: (+202) 37485199 - 37488164 - 37492276 - 33368891  
Fax : (+202) 37486253  
E-mail: misraymond@osmangroup.net

٢٠ شارع هارون - الدقى - الجيزة ج.م.ع  
تليفون : ٣٣٣٦٨٨٩١ - ٣٧٤٩٢٢٧٦ - ٣٧٤٨٨١٦٤ - ٣٧٤٨٥١٩٩  
فاكس : ٣٧٤٨٦٢٥٣

## UNIT WEIGHT & VOIDS IN AGGREGATE

Date : 19/02/2020  
Client : El Sweedy Cement  
Plant Location :  
Client Reference : Q 2148  
Delivery Date : 16/02/2020  
Source : Al Galala  
Sample Taken by : The Client

<u>Type and Size of Aggregate</u>	<u>Rodded Unit Wt. -T/m3</u>
Dolomite Size # 2	1.523

Remarks :

Checked By :



Eng.Ashraf A.Zaki

Misr Raymond Foundations  
S.A.E



شركة مصر ريموند للأساسات  
ش.م.ع

20, Haroun St. Dokki, GIZA - Arab Republic Of Egypt  
Phone: (+202) 37485199 - 37488164 - 37492276 - 33368891  
Fax : (+202) 37486253  
E-mail: misraymond@osmangroup.net

٢٠ شارع هارون - الدقى - الجيزة - ج.م.ع  
تليفون : ٣٣٣٦٨٨٩١ - ٣٧٤٩٢٢٧٦ - ٣٧٤٨٨١٦٤ - ٣٧٤٨٥١٩٩  
فاكس : ٣٧٤٨٦٢٥٣

**RESISTANCE TO ABRASION OF COARSE  
AGGREGATE BY THE USE OF  
LOS ANGELES MACHINE  
ASTM C 131**

Date : 19/02/2020  
Client : El Sweedy Cement  
Plant Location :  
Client Reference : Q 2148  
Delivery Date : 16/02/2020  
Source : Al Galala  
Sample Taken by : The Client

<u>Type and Size of Aggregate</u>	<u>Grading Used</u>	<u>% of Wear</u>
Dolomite size # 2	B	20.0
Limits MAX		50.0

**Remarks :**

Checked By :

Eng. Ashraf A. Zaki



**Misr Raymond Foundations**  
S.A.E



شركة مصر ريموند للأساسات  
ش.م.م

20, Haroun St. Dokki, GIZA - Arab Republic Of Egypt  
Phone: (+202) 37485199 - 37488164 - 37492276 - 33368891  
Fax : (+202) 37486253  
E-mail: misraymond@osmangroup.net

٢٠ شارع هارون - الدقى - الجيزة ج.م.ع  
تليفون : ٣٣٣٦٨٨٩١ - ٣٧٤٩٢٢٧٦ - ٣٧٤٨٨١٦٤ - ٣٧٤٨٥١٩٩  
فاكس : ٣٧٤٨٦٢٥٣

## CLAY LUMPS AND FRIABLE PARTICLES OF AGGREGATE

ASTM C 142

ASTM C 33

Date : 19/02/2020  
Client : El Sweedy Cement  
Plant Location :  
Client Reference : Q 2148  
Delivery Date : 16/02/2020  
Source : Al Galala  
Sample Taken by : The Client

<u>Type and Size of Aggregate</u>	<u>Clay Lumps and Friable Particles ( % )</u>
Dolomite Size # 2	0.7
Limits Max.	3.0

Remarks :

Tested By :

Checked By :

Eng.Ashraf A.Zaki





Misr Raymond Foundations  
S.A.E



شركة مصر ريموند للأساسات  
ش.م.ع

20, Haroun St. Dokki, GIZA - Arab Republic Of Egypt  
Phone: (+202) 37485199 - 37488164 - 37492276 - 33368891  
Fax : (+202) 37486253  
E-mail: misraymond@osmangroup.net

٢٠ شارع هارون - الدقى - الجيزة ج.م.ع  
تليفون : ٣٣٣٦٨٨٩١ - ٣٧٤٩٢٢٧٦ - ٣٧٤٨٨١٦٤ - ٣٧٤٨٥١٩٩  
فاكس : ٣٧٤٨٦٢٥٣

### AGGREGATE CRUSHING VALUE

BS 812 - Part 110

Date : 19/02/2020  
Client : El Sweedy Cement  
Plant Location :  
Client Reference : Q 2148  
Delivery Date : 16/02/2020  
Source : Al Galala  
Sample Taken by : The Client

<u>Type and Size of Aggregate</u>	<u>CRUSHING VALUE (%)</u>
Dolomite size # 2	20.3

Remarks :

Checked By :

Eng. Ashraf A. Zaki



Misr Raymond Foundations  
S.A.E



شركة مصر ريموند للأساسات  
ش.م.ع

20, Haroun St. Dokki, GIZA - Arab Republic Of Egypt  
Phone: (+202) 37485199 - 37488164 - 37492276 - 33368891  
Fax : (+202) 37486253  
E-mail: misraymond@osmangroup.net

٢٠ شارع هارون - الدقي - الجيزة ج.م.ع  
تليفون : ٣٣٣٦٨٨٩١ - ٣٧٤٩٢٢٧٦ - ٣٧٤٨٨١٦٤ - ٣٧٤٨٥١٩٩  
فاكس : ٣٧٤٨٦٢٥٣

## AGGREGATE IMPACT VALUE

BS 812 - Part 112

Date : 19/02/2020  
Client : El Sweedy Cement  
Plant Location :  
Client Reference : Q 2148  
Delivery Date : 16/02/2020  
Source : Al Galala  
Sample Taken by : The Client

<u>Type and Size of Aggregate</u>	<u>IMPACT VALUE ( % )</u>
Dolomite size # 2	6.9

Remarks :

Checked By :

Eng. Ashraf A. Zaki



Misr Raymond Foundations  
S.A.E



شركة مصر ريموند للأساسات  
ش.م.م

20, Haroun St. Dokki, GIZA - Arab Republic Of Egypt  
Phone: (+202) 37485199 - 37488164 - 37492276 - 33368891  
Fax : (+202) 37486253  
E-mail: misraymond@osmangroup.net

٢٠ شارع هارون - الدقي - الجيزة ج.م.ع  
تليفون : ٣٣٣٦٨٨٩١ - ٣٧٤٩٢٢٧٦ - ٣٧٤٨٨١٦٤ - ٣٧٤٨٥١٩٩  
فاكس : ٣٧٤٨٦٢٥٣

## ELONGATION AND FLAKINESS OF AGGREGATE

BS 812

Date : 19/02/2020  
Client : El Sweedy Cement  
Plant Location :  
Client Reference : Q 2148  
Delivery Date : 16/02/2020  
Source : Al Galala  
Sample Taken by : The Client

<u>Type and Size of Aggregate</u>	<u>Elongation Index %</u>	<u>Flakiness Index %</u>
Dolomite Size # 2	11.8	20.9
Limits                      MAX	25.0	25.0

Remarks :

Checked By :

Eng. Ashraf A. Zaki



**Misr Raymond Foundations**  
S.A.E



شركة مصر ريموند للأساسات  
ش.م.م

20, Haroun St. Dokki, GIZA - Arab Republic Of Egypt  
Phone: (+202) 37485199 - 37488164 - 37492276 - 33368891  
Fax : (+202) 37486253  
E-mail: misraymond@osmangroup.net

٢٠ شارع هارون - الدقى - الجيزة ج.م.ع  
تليفون : ٣٣٣٦٨٨٩١ - ٣٧٤٩٢٢٧٦ - ٣٧٤٨٨١٦٤ - ٣٧٤٨٥١٩٩  
فاكس : ٣٧٤٨٦٢٥٣

## CHLORIDE & SULPHATE IN COARSE AGGREGATE

BS 812 - Part 117 & 118

Date : 19/02/2020  
Client : El Sweedy Cement  
Plant Location :  
Client Reference : Q 2148  
Delivery Date : 16/02/2020  
Source : Al Galala  
Sample Taken by : The client

<u>Type and Size of Aggregate</u>	<u>Acid Soluble Sulphate</u>	<u>Chloride Content As</u>	<u>Chloride Content As</u>
	<u>SO<sub>3</sub>-</u>	<u>NaCl</u>	<u>Cl-</u>
Dolomite size # 2	0.29	0.026	0.016
Limits MAX	0.4		0.04

**Remarks :**

- 1- Acid soluble sulphate.
- 2- Chloride test was done without crushing .

Checked By :

  
Chemist Hanaa.M.Eid



Misr Raymond Foundations

S.A.E



شركة مصر ريموند للأساسات

ش.م.م

20 Haroun St. Dokki, GIZA - ArabRepublic Of Egypt  
 Phone: (202) 7485199 - 7488164 - 7492276 - 3368891  
 Fax: (202) 7486253

٢٠ شارع هارون - الدقي - الجيزة - ج.م.ع  
 تلفون ٧٤٨٥١٩٩ - ٧٤٨٨١٦٤ - ٧٤٩٢٢٧٦ - ٣٣٦٨٨٩١  
 فاكس ٧٤٨٦٢٥٣

**SOUNDNESS OF COARSE  
 AGGREGATE BY USE OF  
 MAGNESIUM SULPHATE**

(ASTM C 88)

(ASTM C 33)

Date : 24/02/2020  
 Client : El Sewedy Ready Mix  
 Location :  
 Reference : Q 2148  
 Del. Date : 18/02/2020  
 Type of Aggregate : Dolomite size # 2  
 Source : Al Galala

Sieve Size		Grading of Original Sample	Wt. of Fraction Before Test	% Passing Designated Sieve After Test	Weighted % Loss
Passing	Retained	%	gm.		
63.0mm (2 1/2 in.)	50.0mm (2 in.)				
50.0mm (2 in.)	37.5mm (1 1/2 in.)				
37.5mm (1 1/2 in.)	25.0mm (1 in.)				
25.0mm (1 in.)	19.0mm (3/4 in.)	13.7	1500	0.6	0.08
19.0mm (3/4 in.)	12.5mm (1/2 in.)				
12.5mm (1/2 in.)	9.5mm (3/8 in.)	85.7	1000	0.8	0.69
9.5mm (3/8 in.)	4.75mm (No. 4)	0.5	---	0.8	0.00
4.75mm (No. 4)		0.1	---	0.8	0.00
Total		100.0			0.77

**Remarks :**

- \* No. of cycles : Five Cycles
- \* Solution used : Fresh Magnesium Sulphate .
- \* The sample complies with the requirements of ASTM C 33

**Limits :**

Max. 18

Tested By :

Checked By :

Eng. Ashraf A. Zaki



**Misr Raymond Foundations**

S.A.E



شركة مصر ريموند للأساسات  
ش.م.ع

20, Haroun St. Dokki, GIZA - Arab Republic Of Egypt  
Phone: (+202) 37485199 - 37488164 - 37492276 - 33368891  
Fax : (+202) 37486253  
E-mail: misraymond@osmangroup.net

٢٠ شارع هارون - الدقى - الجيزة ج. م. ع  
تليفون : ٣٣٣٦٨٨٩١ - ٣٧٤٩٢٢٧٦ - ٣٧٤٨٨١٦٤ - ٣٧٤٨٥١٩٩  
فاكس : ٣٧٤٨٦٢٥٣

## COMPLETE CHEMICAL ANALYSIS OF CEMENT

Date : 19/02/2020  
Client : El Sweedy Cement  
Plant Location :  
Reference : Q 2148

Sample No. :  
Type of Cement : CEM I / 42.5N  
Source of Cement : Al Sewedy  
Date Sample Obtained : 16/2/2020

	%
SiO <sub>2</sub>	22.41
Ins.Res.	0.60
Al <sub>2</sub> O <sub>3</sub>	5.02
Fe <sub>2</sub> O <sub>3</sub>	3.41
CaO	59.77
MgO	2.10
SO <sub>3</sub>	2.33
L.O.I.	3.11
Undetermined	1.25
<b>TOTAL</b>	<b>100.00</b>

### REQUIREMENTS OF - ES 4756 / 2007


MAX	5.0%
* MAX	3.5%
MAX	5.0%

C <sub>3</sub> A	7.54
Cl <sup>-</sup>	0.035

### Remarks :

Tested By :

Checked By :

  
Chemist Hanaa.M.Eid

Misr Raymond Foundations

S.A.E

20 Haroun St. Dokki, GIZA - ArabRepublic Of Egypt  
 Phone: (202)7485199 - 7488164 - 7492276 - 3368891  
 Fax: (202)7486253



شركة مصر ريموند للأساسات

ش.م.ع

٢٠ شارع هارون - الدقي - الجيزة - ج.م.ع  
 تليفون : ٧٤٨٥١٩٩ - ٧٤٨٨١٦٤ - ٧٤٩٢٢٧٦ - ٣٣٦٨٨٩١  
 فاكس : ٧٤٨٦٢٥٣

**PHYSICAL ANALYSIS OF CEMENT****ES 4756 - 1**

Date : 19/02/2020  
 Client : El Sweedy Cement  
 Plant Location :  
 Reference : Q 2148

Type of Cement : CEM I (42.5N)  
 Source of Cement : Al Sewedy  
 Date Sample Obtained : 16/2/2020  
 Sample Taken By : The Client

**1 - Setting Time : ( Vicat )**

	Result	Limits
Initial Setting Time	175 Minutes	Not Less Than 60 Minutes
Final Setting Time		

**2 - Compressive Strength :**

	Age			Age
	2 Days			
	1	2	3	
Date of Casting	16/2/20			
Date of Testing	18/2/20			
Crushing Load ( KN )	36.8	37.9	37.1	
Strength ( N/mm <sup>2</sup> )	23.0	23.7	23.2	
Average ( N/mm <sup>2</sup> )	23.3			
Specification (N/mm <sup>2</sup> )	10.0			

**3 - Fineness : ( Blaine )**

	Result	Limits
Fineness of sample	3497 cm <sup>2</sup> /gm.	Not Less Than --- cm <sup>2</sup> /gm.

**4 - Soundness :**

	Result	Limits
Soundness of sample	1.1 mm.	Not More Than 10 mm.

Optimum Consistency ASTM C - 187 : 25.8 %

**Remarks :**

Tested By :

Checked By :



Eng Ashraf A Zaki

Misr Raymond Foundations  
S.A.E

20 Haroun St. Dokki, GIZA - ArabRepublic Of Egypt  
Phone: (202) 7485199 - 7488164 - 7492276 - 3368891  
Fax: (202) 7486253



شركة مصر ريموند للأساسات  
ش.م.ع

٢٠ شارع هارون - الدقى - الجيزة - ج.م.ع  
تليفون : ٧٤٨٥١٩٩ - ٧٤٨٨١٦٤ - ٧٤٩٢٢٧٦ - ٣٣٦٨٨٩١  
فاكس : ٧٤٨٦٢٥٣

## AUTOCLAVE EXPANSION OF CEMENT ASTM C- 151

Date : 24/02/2020  
Client : El Sewedy Ready Mix  
Location :  
Client Ref. : Q 2148  
Delivery Date : 16/02/2020  
Source : El Sewedy Cement

### TYPE OF CEMENT

### % OF INCREASE IN LENGTH

O.P.C.

0.017

LIMITS

MAX.

0.80

### Remarks :

The sample complies with the requirements of ASTM C- 150

Checked/By :



Eng. Ashraf A.Zaki



Misr Raymond Foundations  
S.A.E

20, Haroun St. Dokki, GIZA - Arab Republic Of Egypt  
Phone: (+202) 37485199 - 37488164 - 37492276 - 33368891  
Fax : (+202) 37486253  
E-mail: misraymond@osmangroup.net



شركة مصر ريموند للأساسات  
ش.م.م

٢٠ شارع هارون - الدقى - الجيزة - ج.م.ع  
تليفون : ٣٣٣٦٨٨٩١ - ٣٧٤٩٢٢٧٦ - ٣٧٤٨٨١٦٤ - ٣٧٤٨٥١٩٩  
فاكس : ٣٧٤٨٦٢٥٣

**COMPLETE CHEMICAL ANALYSIS  
OF CEMENT  
ES 583**

Date : 19/02/2020  
Client : El Sweedy Cement  
Plant Location :  
Client Reference : Q 2148

Type of Cement : Sulphate Resisting(42.5N)  
Delivery Date : 16/02/2020  
Source of Cement: Al Sewedy  
Sample Taken by : The Client

	PERCENT	REQUIREMENTS OF - ES 583 / 2005
SiO <sub>2</sub>	22.14	
Ins.Res.	0.62	MAX 1.5 %
Al <sub>2</sub> O <sub>3</sub>	4.10	
Fe <sub>2</sub> O <sub>3</sub>	5.31	
CaO	59.16	
MgO	2.14	
SO <sub>3</sub>	2.10	MAX 3.5 %
L.O.I.	3.19	MAX 3.0 %
Undetermined	1.24	
TOTAL	100.00	
Cl <sup>-</sup>	0.043	MAX 0.10 %
C <sub>3</sub> A	1.89	MAX 3.5 %

Tested By :

Checked By :

Chemist Hanaa.M.Eid



Misr Raymond Foundations

S.A.E



شركة مصر ريموند للأساسات  
ش.م.ع

20 Haroun St. Dokki, GIZA - ArabRepublic Of Egypt  
Phone: (202)7485199 - 7488164 - 7492276 - 3368891  
Fax: (202)7486253

٢٠ شارع هارون - الدقي - الجيزة - ج.م.ع  
تليفون : ٣٣٦٨٨٩١ - ٧٤٩٢٢٧٦ - ٧٤٨٨١٦٤ - ٧٤٨٥١٩٩  
فاكس : ٧٤٨٦٢٥٣

## PHYSICAL ANALYSIS OF CEMENT

ES 583

Date : 19/02/2020

Client : El Sweedy Cement

Plant Location :

Reference : Q 2148

Type of Cement : Sulphate Resisting(42.5N)

Source of Cement : Al Sewedy

Date Sample Obtained : 16/2/2020

Sample Taken By : The Client

### 1 - Setting Time : ( Vicat )

Result

Limits

Initial Setting Time	185	Minutes	Not Less Than 60 Minutes
Final Setting Time			

### 2 - Compressive Strength :

Age

Age

	2 Days				
	1	2	3		
Date of Casting	16/2/20				
Date of Testing	18/2/20				
Crushing Load ( KN )	29.5	30.5	31.0		
Strength ( N/mm <sup>2</sup> )	18.4	19.1	19.4		
Average ( N/mm <sup>2</sup> )	19.0				
Specification (N/mm <sup>2</sup> )	10.0				

### 3 - Fineness : ( Blaine )

Result

Limits

Fineness of sample	3743	cm <sup>2</sup> /gm.	Not Less Than --- cm <sup>2</sup> /gm.
--------------------	------	----------------------	--

Result

Limits

Soundness of sample	1.1	mm.	Not More Than 10 mm.
---------------------	-----	-----	----------------------

Optimum Consistency ASTM C - 187 : 26.6 %

Remarks :

Tested By :



Checked By :

Eng.Ashraf A.Zaki

Misr Raymond Foundations

S.A.E

20 Haroun St. Dokki, GIZA - ArabRepublic Of Egypt  
 Phone: (202)7485199 - 7488164 - 7492276 - 3368891  
 Fax: (202)7486253



شركة مصر ريموند للأساسات

ش.م.ع

٢٠ شارع هارون - الدقى - الجيزة - ج.م.ع  
 تليفون : ٧٤٨٥١٩٩ - ٧٤٨٨١٦٤ - ٧٤٩٢٢٧٦ - ٣٣٦٨٨٩١  
 فاكس : ٧٤٨٦٢٥٣

**AUTOCLAVE EXPANSION OF CEMENT**  
**ASTM C- 151**

Date : 24/02/2020  
 Client : El Sewedy Ready Mix  
 Location :  
 Client Ref. : Q 2148  
 Delivery Date : 16/02/2020  
 Source : El Sewedy Cement

**TYPE OF CEMENT****% OF INCREASE IN LENGTH**

S.R.C.

0.011

LIMITS

MAX.

0.80

**Remarks :**

The sample complies with the requirements of ASTM C- 150



Checked By :

Eng. Ashraf A.Zaki

**Misr Raymond Foundations**  
S.A.E



شركة مصر ريموند للأساسات  
ش.م.م

20, Haroun St. Dokki, GIZA - Arab Republic Of Egypt  
Phone: (+202) 37485199 - 37488164 - 37492276 - 33368891  
Fax : (+202) 37486253  
E-mail: misraymond@osmangroup.net

٢٠ شارع مارون - الدقى - الجيزة ج.م.ع  
تليفون : ٣٣٣٦٨٨٩١ - ٣٧٤٩٢٢٧٦ - ٣٧٤٨٨١٦٤ - ٣٧٤٨٥١٩٩  
فاكس : ٣٧٤٨٦٢٥٣

## COMPLETE CHEMICAL ANALYSIS OF CEMENT

Date : 19/02/2020  
Client : El Sweedy Cement  
Plant Location :  
Reference : Q 2148

Sample No. :  
Type of Cement : CEM I / 42.5N  
Source of Cement : Bani Suef  
Date Sample Obtained : 16/2/2020

	%
SiO <sub>2</sub>	22.01
Ins.Res.	0.68
Al <sub>2</sub> O <sub>3</sub>	5.01
Fe <sub>2</sub> O <sub>3</sub>	3.31
CaO	61.03
MgO	2.14
SO <sub>3</sub>	2.28
L.O.I.	2.30
Undetermined	1.24
<b>TOTAL</b>	<b>100.00</b>

### REQUIREMENTS OF - ES 4756 / 2007

MAX	5.0%
* MAX	3.5%
MAX	5.0%

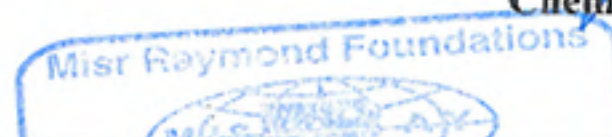
C <sub>3</sub> A	7.68
Cl <sup>-</sup>	0.032

Remarks :

Tested By :

Checked By :

Chemist Hanaa.M.Eid



Misr Raymond Foundations

S.A.E

شركة مصر ريموند للأساسات  
ش.م.ع20 Haroun St. Dokki, GIZA - ArabRepublic Of Egypt  
Phone: (202)7485199 - 7488164 - 7492276 - 3368891  
Fax: (202)7486253٢٠ شارع هارون - الدقي - الجيزة - ج.م.ع  
تليفون : ٧٤٨٥١٩٩ - ٧٤٨٨١٦٤ - ٧٤٩٢٢٧٦ - ٣٣٦٨٨٩١  
فاكس : ٧٤٨٦٢٥٣**PHYSICAL ANALYSIS OF CEMENT****ES 4756 - 1**

Date : 19/02/2020

Client : El Sweedy Cement

Plant Location :

Reference : Q 2148

Type of Cement : CEM I (42.5N)

Source of Cement : Bani Suef

Date Sample Obtained : 16/2/2020

Sample Taken By : The Client

**1 - Setting Time : ( Vicat )**

Result

Limits

Initial Setting Time	180	Minutes	Not Less Than 60 Minutes
Final Setting Time			

**2 - Compressive Strength :**

Age

Age

	2 Days				
	1	2	3		
Date of Casting	16/2/20				
Date of Testing	18/2/20				
Crushing Load ( KN )	39.8	40.3	38.7		
Strength ( N/mm <sup>2</sup> )	24.9	25.2	24.2		
Average ( N/mm <sup>2</sup> )	24.8				
Specification (N/mm <sup>2</sup> )	10.0				

**3 - Fineness : ( Blaine )**

Result

Limits

Fineness of sample	3564	cm <sup>2</sup> /gm.	Not Less Than --- cm <sup>2</sup> /gm.
--------------------	------	----------------------	--

**4 - Soundness :**

Result

Limits

Soundness of sample	1.0	mm.	Not More Than 10 mm.
---------------------	-----	-----	----------------------

Optimum Consistency ASTM C - 187 : 26.2 %

**Remarks :**

Tested By :

Checked By :


Eng. Ashraf A. Zaki

Misr Raymond Foundations

S.A.E



شركة مصر ريموند للأساسات

ش.م.ع

20 Haroun St. Dokki, GIZA - ArabRepublic Of Egypt  
Phone: (202)7485199 - 7488164 - 7492276 - 3368891  
Fax: (202)7486253

٢٠ شارع هارون - الدقي - الجيزة - ج.م.ع  
تليفون : ٣٣٦٨٨٩١ - ٧٤٩٢٢٧٦ - ٧٤٨٨١٦٤ - ٧٤٨٥١٩٩  
فاكس : ٧٤٨٦٢٥٣

## AUTOCLAVE EXPANSION OF CEMENT ASTM C- 151

Date : 24/02/2020  
Client : El Sewedy Ready Mix  
Location :  
Client Ref. : Q 2148  
Delivery Date : 16/02/2020  
Source : Beni Suef Cement

### TYPE OF CEMENT

### % OF INCREASE IN LENGTH

O.P.C.

0.031

LIMITS

MAX.

0.80

### Remarks :

The sample complies with the requirements of ASTM C- 150

Checked By :

Eng. Ashraf A.Zaki



Misr Raymond Foundations  
S.A.E



شركة مصر ريموند للأساسات  
ش.م.م

20, Harouni St. Dokki, GIZA - Arab Republic Of Egypt  
Phone: (+202) 37485199 - 37488164 - 37492277 - 33368891  
Fax : (+202) 37486253  
E-mail: misraymond@osmangroup.net

٢٠ شارع هارون - الدقي - الجيزة - ج.م.ع  
تليفون : ٣٣٣٦٨٨٩١ - ٣٧٤٩٢٢٧٦ - ٣٧٤٨٨١٦٤ - ٣٧٤٨٥١٩٩  
فاكس : ٣٧٤٨٦٢٥٣

## GRAIN SIZE DISTRIBUTION

Date: 19/2/2020

Client : El Sweedy Ready Mix

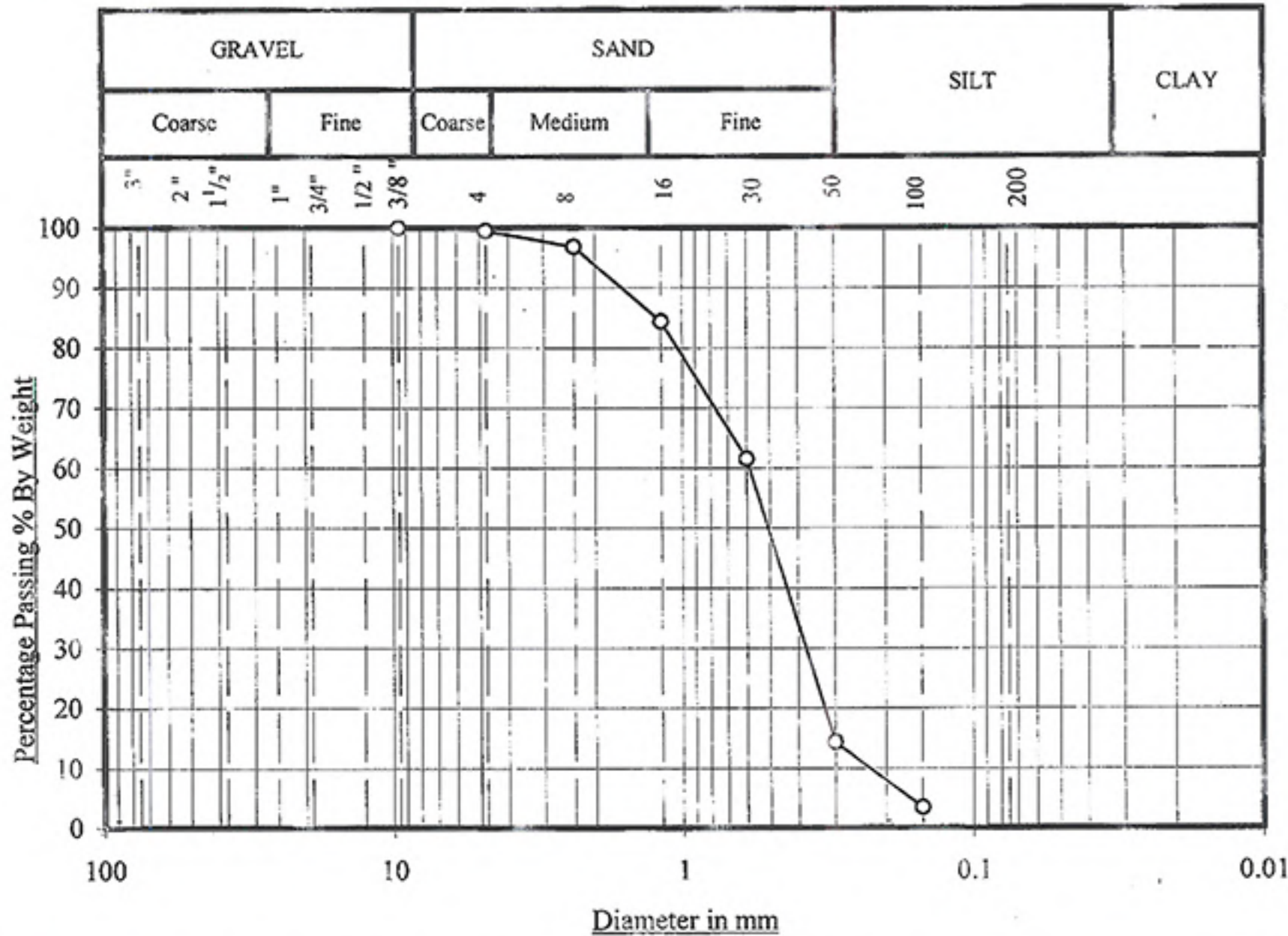
Plant Location :

Source: الصف

Sample taken by : The client

Delivery Date : 16/2/2020

Sand



Sieve No.	3/8"	No. 4	No. 8	No. 16	30	50	100		% pass
Sieve size (mm)	9.5	4.75	2.36	1.18	0.600	0.300	0.150		200
% Passing	100.0	99.5	96.8	84.4	61.5	14.3	3.4		2.9
Limits									

Remarks :

F.M. = 2.4

Tested By

Checked By :



Eng. Ashraf A Zaki

Misr Raymond Foundations  
S.A.E



شركة مصر ريموند للأساسات  
ش.م.م

20, Haroun St. Dokki, GIZA - Arab Republic Of Egypt  
Phone: (+202) 37485199 - 37488164 - 37492276 - 33368891  
Fax : (+202) 37485253  
E-mail: misraymond@osmangroup.net

٢٠ شارع هارون - الدقي - الجيزة - ج.م.ع  
تليفون : ٣٣٣٦٨٨٩١ - ٣٧٤٩٢٢٧٦ - ٣٧٤٨٨١٦٤ - ٣٧٤٨٥١٩٩  
فاكس : ٣٧٤٨١٢٥٣

**ORGANIC IMPURITIES**  
**IN FINE AGGREGATE FOR CONCRETE**  
**ASTM C-40**

Date : 19/02/2020  
Client : El Sweedy Cement  
Plant Location :  
Client Reference : Q 2148  
Delivery Date : 16/02/2020  
Source : الصف  
Sample Taken by : The Client

<u>Type and Size of Aggregate</u>	<u>Organic Plate No. :</u>
Sand	Plate I ( Nil )

**Remarks :**

\* The sample does not contain organic impurities

Checked By :

Eng.Ashraf A.Zaki





Misr Raymond Foundations  
S.A.E20 Haroun St. Dokki, GIZA - ArabRepublic Of Egypt  
Phone: (202)7485199 - 7488164 - 7492276 - 3368891  
Fax: (202)7486253شركة مصر ريموند للأساسات  
م.م.ع٢٠ شارع هارون - الدقى - الجيزة - ج.م.ع  
تليفون : ٧٤٨٥١٩٩ - ٧٤٨٨١٦٤ - ٧٤٩٢٢٧٦ - ٣٣٦٨٨٩١  
فاكس : ٧٤٨٦٢٥٣

**SOUNDNESS OF FINE  
AGGREGATE BY USE OF  
MAGNESIUM SULPHATE**

**( ASTM C 88 )****( ASTM C 33 )**

Date : 24/02/2020  
Client : El Sewedy Ready Mix  
Location :  
Reference : Q 2148  
Del. Date : 18/02/2020  
Type of Aggregate : Sand  
Source : الصف

Sieve Size		Grading of Original Sample	Wt. of Fraction Before Test	% Passing Designated Sieve After Test	Weighted % Loss
Passing	Retained	%	gm.		
9.5mm (3/8 in.)	4.75mm (No. 4)	0.5	---	0.8	0.00
4.75mm (No. 4)	2.36mm (No. 8)	2.7	---	0.8	0.02
2.36mm (No. 8)	1.18mm (No. 16)	12.9	100	0.8	0.10
1.18mm (No. 16)	600mm (No. 30)	23.6	100	1.2	0.28
600mm (No. 30)	300mm (No. 50)	48.9	100	2.0	0.98
300mm (No. 50)	150mm (No. 100)	11.3	---	2.0	0.23
150mm (No. 100)		0.1	---	2.0	0.00
Total		100.0			1.62

**Remarks :**

- \* No. of cycles : Five Cycles
- \* Solution used : Fresh Magnesium Sulphate .
- \* The sample complies with the requirements of ASTM C 33

**Limits :**

Max. 15

**Tested By :****Checked By :**

Eng. Ashraf A. Zaki



Misr Raymond Foundations  
S.A.E



شركة مصر ريموند للأساسات  
ش.م.م

20, Haroun St. Dokki, GIZA - Arab Republic Of Egypt  
Phone: (+202) 37485199 - 37488164 - 37492276 - 33368891  
Fax : (+202) 37486253  
E-mail: misraymond@osmangroup.net

٢٠ شارع هارون - الدقي - الجيزة ج.م.ع  
تليفون : ٣٣٣٦٨٨٩١ - ٣٧٤٩٢٢٧٦ - ٣٧٤٨٨١٦٤ - ٣٧٤٨٥١٩٩  
فاكس : ٣٧٤٨٦٢٥٣

## CLAY LUMPS AND FRIABLE PARTICLES OF AGGREGATE

ASTM C 142

ASTM C 33

Date : 19/02/2020  
Client : El Sweedy Batch Plant  
Plant Location :  
Client Reference : Q 2148  
Delivery Date : 16/02/2020  
Source : الصف  
Sample Taken by : The Client

<u>Type and Size of Aggregate</u>	<u>Clay Lumps and Friable Particles ( % )</u>
Sand	0.5
Limits Max.	3.0

Remarks :

Tested By :

Checked By :

Eng.Ashraf A.Zaki



Misr Raymond Foundations  
S.A.E



شركة مصر ريموند للأساسات  
ش.م.ع

20, Haroun St. Dokki, GIZA - Arab Republic Of Egypt  
Phone: (+202) 37485199 - 37488164 - 37492276 - 33368891  
Fax : (+202) 37486253  
E-mail: misraymond@osmangroup.net

٢٠ شارع هارون - الدقي - الجيزة ج.م.ع  
تليفون : ٣٣٣٦٨٨٩١ - ٣٧٤٩٢٢٧٦ - ٣٧٤٨٨١٦٤ - ٣٧٤٨٥١٩٩  
فاكس : ٣٧٤٨٦٢٥٣

### UNIT WEIGHT & VOIDS IN AGGREGATE

Date : 19/02/2020  
Client : El Sweedy Cement  
Plant Location : El Tagamoa B.Plant  
Client Reference : Q 2148  
Delivery Date : 16/02/2020  
Source : الصف  
Sample Taken by : The Client

<u>Type and Size of Aggregate</u>	<u>Rodded Unit Wt. -T/m3</u>
Sand	1.692

Remarks :

Checked By :

Eng.Ashraf A.Zaki



Misir Raymond Foundations  
S.A.E



شركة مصر ريموند للأساسيات  
ش.م.ع

20, Haroun St. Dokki, GIZA - Arab Republic Of Egypt  
Phone: (+202) 37485199 - 37488164 - 37492276 - 33368891  
Fax : (+202) 37486253  
E-mail: misraymond@osmangroup.net

٢٠ شارع هارون - الدقى - الجيزة ج.م.ع  
تليفون : ٣٣٣٦٨٨٩١ - ٣٧٤٩٢٢٧٦ - ٣٧٤٨٨١٦٤ - ٣٧٤٨٥١٩٩  
فاكس : ٣٧٤٨٦٢٥٣

## CHLORIDE & SULPHATE IN FINE AGGREGATE

BS 812 - Part 117 & 118

Date : 19/02/2020  
Client : El Sweedy Cement  
Plant Location :  
Client Reference : Q 2148  
Delivery Date : 16/02/2020  
Source : الصف  
Sample Taken by : The client

Type and Size of Aggregate	Acid Soluble Sulphate	Chloride Content As	Chloride Content As
	SO <sub>3</sub> -	NaCl	Cl-
Sand	21.00	0.095	0.058
Limits	MAX	0.4	0.06

### Remarks :

- 1- Acid soluble sulphate.
- 2- Chloride test was done without crushing .

Checked By :

  
Chemist Hanaa.M.Eid



Misr Raymond Foundations  
S.A.E



شركة مصر ريموند للأساسات  
ش.م.م

20, Haroun St. Dokki, GIZA - Arab Republic Of Egypt  
Phone: (+202) 37485199 - 37488164 - 37492276 - 33368891  
Fax : (+202) 37486253  
E-mail: misraymond@osmangroup.net

٢٠ شارع هارون - الدقي - الجيزة - ج.م.ع  
تليفون : ٣٣٣٦٨٨٩١ - ٣٧٤٩٢٢٧٦ - ٣٧٤٨٨١٦٤ - ٣٧٤٨٥١٩٩  
فاكس : ٣٧٤٨٦٢٥٣

### WATER CHEMICAL ANALYSIS

Date : 19/02/2020  
Client : El Sweedy Cement  
Location :  
Reference : Q 2148  
Delivery Date : 16/02/2020  
Source :  
Sample Taken by : The client

ITEM	CHEMICAL COMPOUND CALCULATED AS PART PER MILLION ( Mg/L. )	MOLECULAR FORMULA	RESULT
1	Total Filtrable residue dried at 105 °C	T.D.S.	450 P.P.M.
2	Alkalinity as Calcium Carbonate	Ca CO <sub>3</sub>	128 P.P.M.
3	Salinity as Sodium Chloride	NaCl	70 P.P.M.
	Salinity as Cl <sup>-</sup>	Cl <sup>-</sup>	42 P.P.M.
4	Sulphate as Sulphur Trioxide	SO <sub>3</sub>	136 P.P.M.
5	Organic Matter	----	80 P.P.M.
6	P H Value		7.7

**Remarks :**

By comparing the above results with the Egyptian Code , the specimen is suitable to be used in concrete mixing .

**Tested By :**

**Checked By:**

**Chemist Hanaa M.Eid**





# PETROGRAPHIC DESCRIPTION

 **EL SEWEDY**  
READY MIX **2021**



معهد بحوث الخامات وتكنولوجيا صناعة مواد البناء  
Raw Building Materials and Processing Technology  
Research Institute



INTERNATIONAL  
ACCREDITATION SERVICE  
TL-337 Accredited to  
ISO/IEC 17025: 2005



المركز القومي لبحوث الإسكان والبناء  
Housing and Building National Research Center

FRM-21-11-RAW كود النموذج  
Lab - 6 / 973/017

## نتائج الفحص المعدني باستخدام جهاز الأشعة السينية المنفردة

Sample Code: Rag 973  
Sample Type: Aggregate  
Test Date : 29/5/2017  
Remarks :

اسم العميل : السويدى للخرسانة الجاهزة

الموقع / المشروع : --

الظروف البيئية لإجراء التجربة : درجة الحرارة  $25 \pm 2$  م°  
الرطوبة النسبية  $35 \pm 2$  %

Compound Name	Chemical Formula
Dolomite	$Ca Mg (C O_3)_2$

- The identification of the most probable phases is carried out using PANalytical computer certified program with the aid of the International Center of Diffraction Database (ICDD) \*\* received with the X-ray diffraction equipment \*\*\*.

\* X'Pert HighScore Software 2006 - Licensed modules: PW3209.

\*\* PDF-2 Database / CD-Release 2005 - Type No. 9430 500 01611.

\*\*\* X'Pert Pro PANalytical -- Manufactured by Panalytical B.V Co., Netherlands (ISO 9001/14001 KEMA - 0.75160).

### Additional Information:

Scan type : Continuous.

Anode material: Copper (Cu).

General setting: 30 mA & 40 KV.

### Notes:

\*. The sample will be retained for 30 days, after which they will be discarded.

\*. The examination result is valid only for the sample delivered.



مدير المعمل

أ.د. منحت صبحي المحلاوى  
(ICDD Member, USA)

Page No. /

87 El-Tahrir St., Dokki, Giza 11511  
P.O.Box: 1770 Cairo, EGYPT

87 شارع التحرير الدقى - جيزة  
ص.ب: 1770 القاهرة

Phone: (+202) 7617102, 7617092 Fax: 3351564, 7628736



معهد بحوث الخامات وتكنولوجيا صناعة مواد البناء  
Raw Building Materials and Processing Technology  
Research Institute

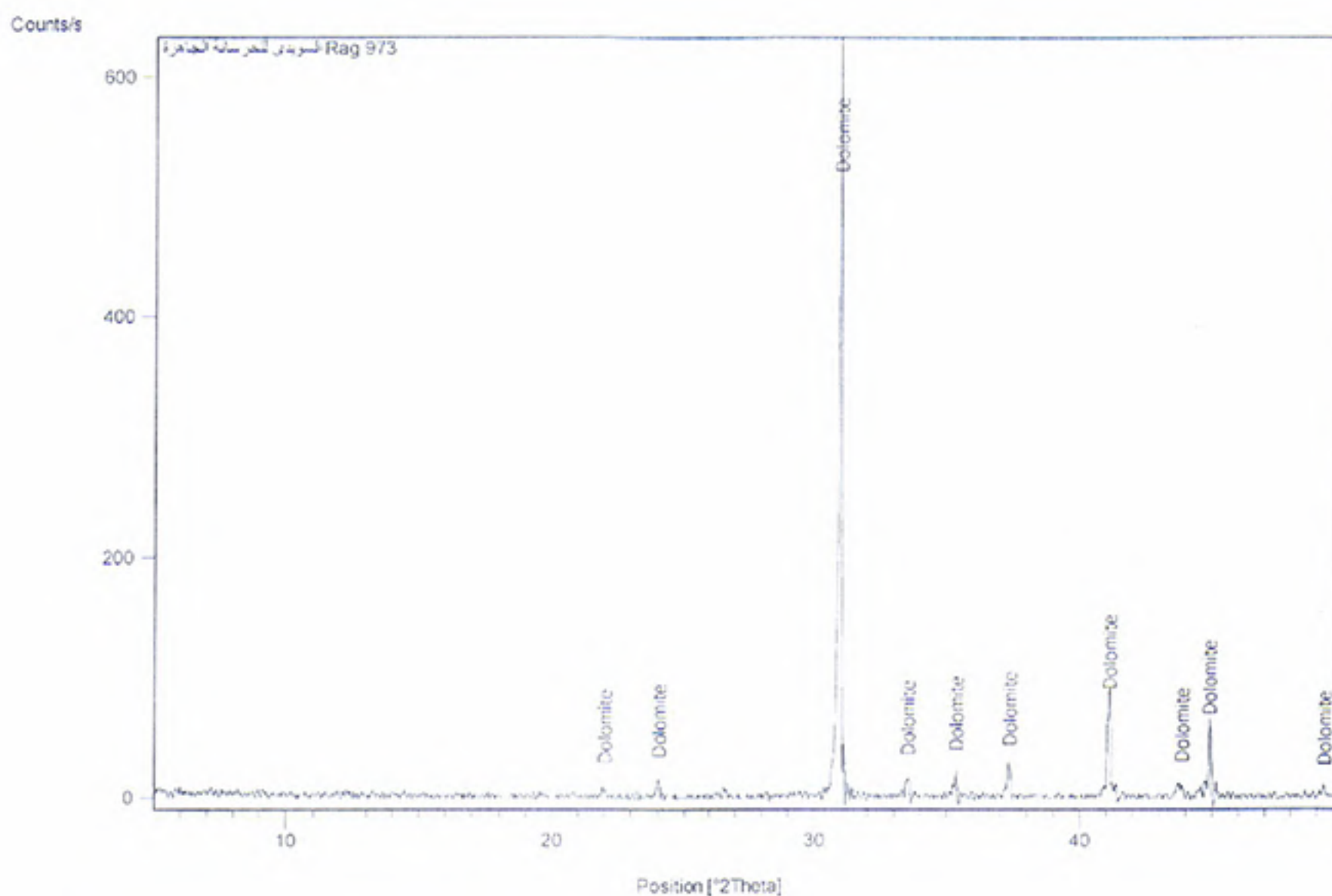


INTERNATIONAL  
ACCREDITATION SERVICE  
TL-337 Accredited to  
ISO/IEC 17025: 2005

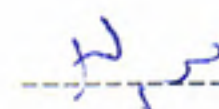


المركز القومي لبحوث الإسكان والبناء  
Housing and Building National Research Center

كود النموذج RAW-FRM-21-01  
Lab - 6 / 973 /017



المراجعة:   


القائم بالاختبار: 

Page No. /

87 El-Tahrir St., Dokki, Giza 11511  
P.O.Box: 1770 Cairo, EGYPT

87 شارع التحرير الدقي - جيزة  
ص.ب: 1770 القاهرة

Phone: (+202) 7617102, 7617092 Fax: 3351564, 7628736



Misr Raymond Foundations

S.A.E

20 Haroun St. Dokki, GIZA - ArabRepublic Of Egypt  
 Phone: (202 )7485199 - 7488164 - 7492276 - 3368891  
 Fax: (202)7486253

شركة مصر ريموند للأساسات  
ش.م.ع

٢٠ شارع هارون - الدقي - الجيزة - ج.م.ع  
 تليفون : ٧٤٨٥١٩٩ - ٧٤٨٨١٦٤ - ٧٤٩٢٢٧٦ - ٣٣٦٨٨٩١  
 فاكس : ٧٤٨٦٢٥٣

### CONCRETE BATCH PLANT CALIBRATION SHEET

Date : 22/02/2021  
 Client : Al Sweedy Ready Mix  
 Location : New Capital B. Plant

Date of Calibration : 21/02/2021  
 Date of Next Calibration : 20/02/2022  
 Type of Mixer : Nesbau

## \* Cement Balance :

Weight (Kg.)	Reading	Diff.	% of Error	Max +/- 1% or +/- 0.3% of the capacity
100	100.0	0.0	0.0	
200	200.0	0.0	0.0	
300	300.0	0.0	0.0	
400	400.0	0.0	0.0	
500	500.0	0.0	0.0	
600	600.0	0.0	0.0	
700	700.0	0.0	0.0	
800	800.0	0.0	0.0	
900	900.0	0.0	0.0	
1000	1000.0	0.0	0.0	
1100	1100.0	0.0	0.0	
1200	1200.0	0.0	0.0	
1300	1300.0	0.0	0.0	

## \* Addmixture Balance :

Weight (Kg.)	Reading	Diff.	% of Error	Max +/- 3%
5	5.00	0.0	0.0	
10	10.00	0.0	0.0	
15	15.00	0.0	0.0	
20	20.00	0.0	0.0	
25	25.00	0.0	0.0	

## \* Water Balance :

Weight (Kg.)	Reading	Diff.	% of Error	Max +/- 1%
100	100.0	0.0	0.0	
200	200.0	0.0	0.0	
300	300.0	0.0	0.0	
400	400.0	0.0	0.0	
500	500.0	0.0	0.0	
600	600.0	0.0	0.0	

Page 2 of 2

## Remarks :

- Limits according to ACI 304 & the Egyptian Code
- The readings of the above batch plant are within

Checked By :

Misr Raymond Foundations



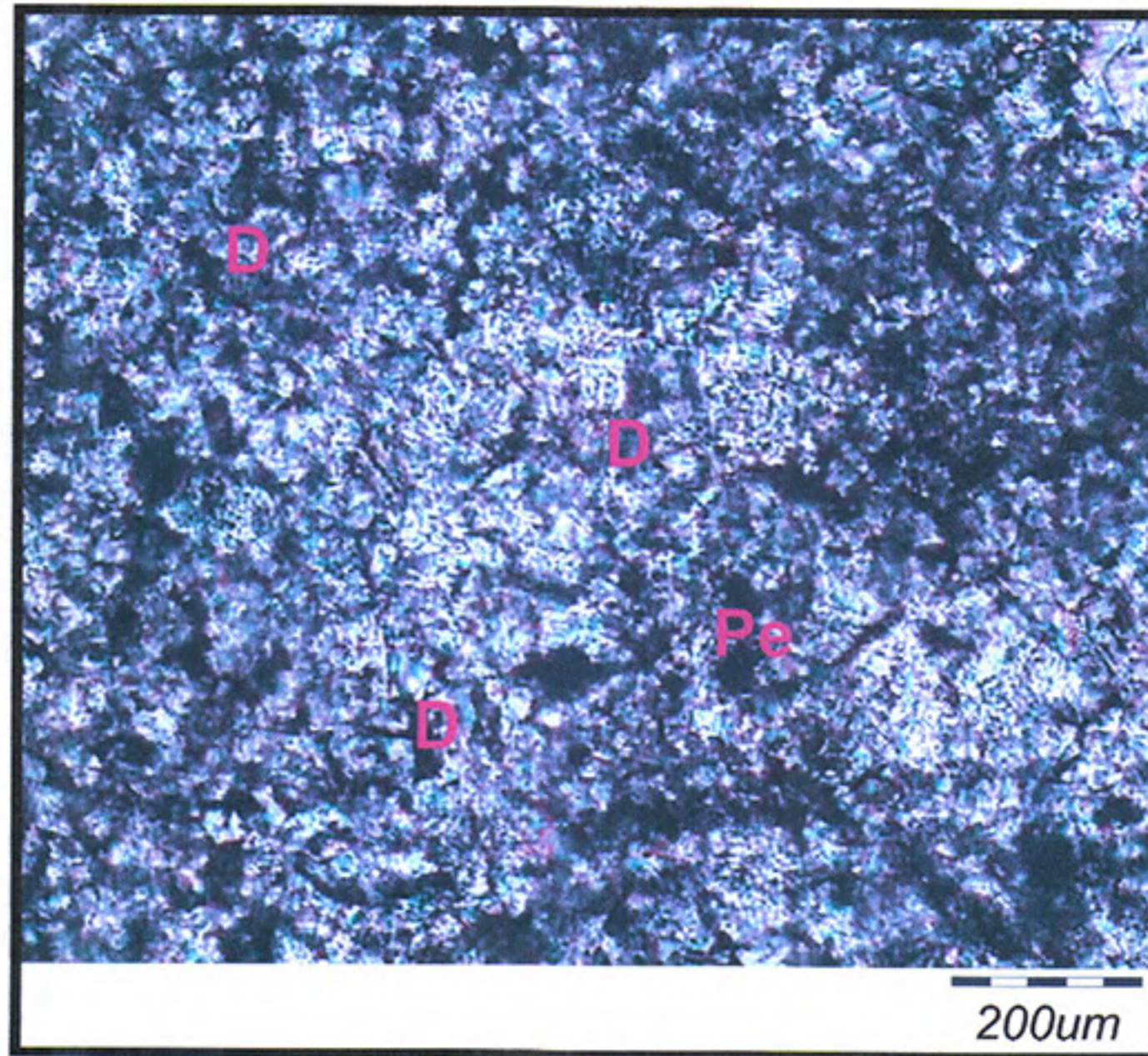


معهد بحوث الخامات وتكنولوجيا صناعة مواد البناء  
Raw Building Materials Technology and  
Processing Research Institute



المركز القومي لبحوث الإسكان والبناء  
Housing and Building National  
Research Center

Petrographical and Mineralogical Test Report  
Pattern Code: RAW - FRM - 21- 10



Thin section photomicrograph of the sample submitted by

شركة السويدى للخرسانة الجاهزة - Rag973  
D: Dolomite Pe: Peloids (XPL, 20)

Test Staff Member

Dr: Abdeen Mohammed





# ADMIXTURE DATA SHEETS

 **EL SEWEDY**  
READY MIX **2021**

**Misr Raymond Foundations**  
S.A.E



شركة مصر ريموند للأساسات  
ش.م.ع

20 Haroun St. Dokki, GIZA - ArabRepublic Of Egypt  
Phone: (202) 7485199 - 7488164 - 7492276 - 3368891  
Fax: (202) 7486253

٢٠ شارع هارون - الدقي - الجيزة - ج.م.ع  
تليفون : ٣٣٦٨٨٩١ - ٧٤٩٢٢٧٦ - ٧٤٨٨١٦٤ - ٧٤٨٥١٩٩  
فاكس : ٧٤٨٦٢٥٣

## UNIFORMITY AND EQUIVALENCE

### TEST ASTM C 494

Date : 19/02/2020  
Client : El Sweedy Cement  
Plant Location :  
Admixture : 833

Client Reference : Q 2148  
Delivery Date : 16/02/2020

<u>ITEM</u>	<u>TYPE OF TEST</u>	<u>RESULT</u>
1	I.R.	Chart
2	Residue by oven drying	36.57 %
3	Specific gravity	1.175
4	P <sup>H</sup> Value	6.48

Remarks :

Tested By :

Checked By :

Chemist Hanaa M.Eid



Misr Raymond Foundations  
S.A.E



شركة مصر ريموند للأساسات  
ش.م.ع

20 Haroun St. Dokki, GIZA - ArabRepublic Of Egypt  
Phone: (202 )7485199 - 7488164 - 7492276 - 3368891  
Fax: (202)7486253

٢٠ شارع هارون - الدقى - الجيزة - ج.م.ع  
تليفون : ٣٣٦٨٨٩١ - ٧٤٩٢٢٧٦ - ٧٤٨٨١٦٤ - ٧٤٨٥١٩٩  
فاكس : ٧٤٨٦٢٥٣

**UNIFORMITY AND EQUIVALENCE**  
**TEST**  
**ASTM C 494**

Date : 05/03/2020  
Client : El Sweedy Cement  
Plant Location :  
Admixture : R 2004

Client Reference : Q 2148  
Delivery Date : 03/03/2020

<u>ITEM</u>	<u>TYPE OF TEST</u>	<u>RESULT</u>
1	I.R.	Chart
2	Residue by oven drying	35.46 %
3	Specific gravity	1.185
4	P <sup>H</sup> Value	7.96

Remarks :

Tested By :

Checked By :

Chemist Hanaa M.Eid



**Misr Raymond Foundations**  
S.A.E



شركة مصر ريموند للأساسات  
ش.م.ع

20 Haroun St. Dokki, GIZA - Arab Republic Of Egypt  
Phone: (202)7485199 - 7488164 - 7492276 - 3368891  
Fax: (202)7486253

٢٠ شارع هارون - الدقي - الجيزة - ج.م.ع  
تليفون : ٧٤٨٥١٩٩ - ٧٤٨٨١٦٤ - ٧٤٩٢٢٧٦ - ٣٣٦٨٨٩١  
فاكس : ٧٤٨٦٢٥٣

**UNIFORMITY AND EQUIVALENCE**  
**TEST**  
**ASTM C 494**

Date : 19/02/2020  
Client : El Sweedy Cement  
Plant Location :  
Admixture : 707

Client Reference : Q 2148  
Delivery Date : 16/02/2020

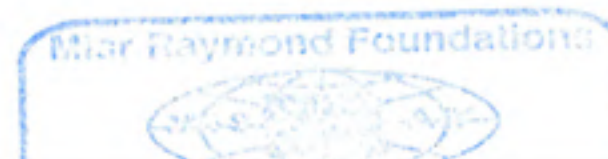
<u>ITEM</u>	<u>TYPE OF TEST</u>	<u>RESULT</u>
1	I.R.	Chart
2	Residue by oven drying	22.99 %
3	Specific gravity	1.112
4	P <sup>H</sup> Value	5.87

Remarks :

**Tested By :**

**Checked By :**

**Chemist Hanaa M.Eid**



Misr Raymond Foundations  
S.A.E



شركة مصر ريموند للأساسات  
ش.م.ع

20 Haroun St. Dokki, GIZA - ArabRepublic Of Egypt  
Phone: (202 )7485199 - 7488164 - 7492276 - 3368891  
Fax: (202)7486253

٢٠ شارع هارون - الدقي - الجيزة - ج.م.ع  
تليفون : ٧٤٨٥١٩٩ - ٧٤٨٨١٦٤ - ٧٤٩٢٢٧٦ - ٣٣٦٨٨٩١  
فاكس : ٧٤٨٦٢٥٣

**UNIFORMITY AND EQUIVALENCE**  
**TEST**  
**ASTM C 494**

Date : 19/02/2020  
Client : El Sweedy Cement  
Plant Location :  
Admixture : 850

Client Reference : Q 2148  
Delivery Date : 16/02/2020

<u>ITEM</u>	<u>TYPE OF TEST</u>	<u>RESULT</u>
1	I.R.	Chart
2	Residue by oven drying	41.48 %
3	Specific gravity	1.191
4	P <sup>H</sup> Value	9.09

**Remarks :**

**Tested By :**

**Checked By :**

**Chemist Hanaa M.Eid**



**Misr Raymond Foundations**  
S.A.E



شركة مصر ريموند للأساسات  
ش.م.ع

20 Haroun St. Dokki, GIZA - Arab Republic Of Egypt  
Phone: (202) 7485199 - 7488164 - 7492276 - 3368891  
Fax: (202) 7486253

٢٠ شارع هارون - الدقي - الجيزة - ج.م.ع  
تليفون ٣٣٦٨٨٩١ - ٧٤٩٢٢٧٦ - ٧٤٨٨١٦٤ - ٧٤٨٥١٩٩  
فاكس : ٧٤٨٦٢٥٣

## UNIFORMITY AND EQUIVALENCE

### TEST ASTM C 494

Date : 19/02/2020  
Client : El Sweedy Cement  
Plant Location :  
Admixture : P 10 Me

Client Reference : Q 2148  
Delivery Date : 16/02/2020

<u>ITEM</u>	<u>TYPE OF TEST</u>	<u>RESULT</u>
1	I.R.	Chart
2	Residue by oven drying	27.59 %
3	Specific gravity	1.042
4	P <sup>H</sup> Value	11.62

Remarks :

**Tested By :**

**Checked By :**

**Chemist Hanaa M.Eid**





Misr Raymond Foundations

S.A.E

شركة مصر ريموند للأساسات  
ش.م.م

20 Haroun St. Dokki, GIZA - Arab Republic Of Egypt  
Phone: (202) 7485199 - 7488164 - 7492276 - 3368891  
Fax: (202) 7486253

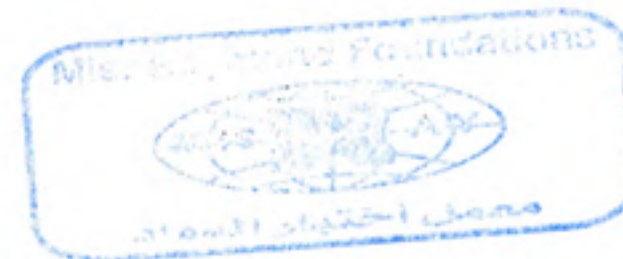
٢٠ شارع هارون - الدقي - الجيزة - ج.م.ع  
تليفون : ٧٤٨٥١٩٩ - ٧٤٨٨١٦٤ - ٧٤٩٢٢٧٦ - ٣٣٦٨٨٩١  
فاكس : ٧٤٨٦٢٥٣

**UNIFORMITY AND EQUIVALENCE****TEST  
ASTM C 494**

Date : 19/02/2020  
Client : El Sweedy Cement  
Plant Location :  
Admixture : 875

Client Reference : Q 2148  
Delivery Date : 16/02/2020

<u>ITEM.</u>	<u>TYPE OF TEST</u>	<u>RESULT</u>
1	I.R.	Chart
2	Residue by oven drying	34.78 %
3	Specific gravity	1.170
4	P <sup>H</sup> Value	6.43

**Remarks :****Tested By :****Checked By :**
  
**Chemist Hanaa M.Eid**


A photograph of a construction site under a clear blue sky. Several long, articulated concrete pump booms extend from the ground towards the top of the frame. In the background, the skeletal structure of a building is visible, including scaffolding and rebar. The foreground shows a dense grid of rebar on a construction floor.

# CALIBRATION CERTIFICATES

 **EL SEWEDY**  
READY MIX **2021**

**Misr Raymond Foundations**  
S.A.E

20 Haroun St. Dokki, GIZA - ArabRepublic Of Egypt  
Phone: (202) 7485199 - 7488164 - 7492276 - 3368891  
Fax: (202) 7486253



شركة مصر ريموند للأساسات  
ش.م.ع

٢٠ شارع هارون - الدقي - الجيزة - ج.م.ع  
تليفون : ٧٤٨٥١٩٩ - ٧٤٨٨١٦٤ - ٧٤٩٢٢٧٦ - ٣٣٦٨٨٩١  
فاكس : ٧٤٨٦٢٥٣

## CONCRETE BATCH PLANT CALIBRATION SHEET

Date : 18/02/2021  
Client : Al Sweedy Ready Mix  
Location : New Cairo B. Plant No.1

Date of Calibration : 17/02/2021  
Date of Next Calibration : 16/02/2022  
Type of Mixer : ELBA

### \* Aggregate Balance :

Weight (Kg.)	Reading	Diff.	% of Error	Max +/- 2%
200	200	0.0	0.0	
400	400	0.0	0.0	
600	600	0.0	0.0	
800	800	0.0	0.0	
1000	1000	0.0	0.0	
1200	1200	0.0	0.0	
1400	1400	0.0	0.0	
1600	1600	0.0	0.0	
1800	1800	0.0	0.0	
2000	2000	0.0	0.0	
2200	2200	0.0	0.0	
2400	2400	0.0	0.0	
2600	2600	0.0	0.0	
2800	2800	0.0	0.0	
3000	3000	0.0	0.0	
3200	3200	0.0	0.0	
3400	3400	0.0	0.0	
3600	3600	0.0	0.0	
3800	3800	0.0	0.0	
4000	4000	0.0	0.0	
4200	4200	0.0	0.0	
4400	4400	0.0	0.0	
4600	4600	0.0	0.0	
4800	4800	0.0	0.0	
5000	5000	0.0	0.0	

### \* Cement Balance :

Weight (Kg.)	Reading	Diff.	% of Error	Max +/- 1% or +/- 0.3% of the capacity
100	100.0	0.0	0.0	
200	200.0	0.0	0.0	
300	300.0	0.0	0.0	
400	400.0	0.0	0.0	
500	500.0	0.0	0.0	
600	600.0	0.0	0.0	
700	700.0	0.0	0.0	
800	800.0	0.0	0.0	
900	900.0	0.0	0.0	
1000	1000.0	0.0	0.0	
1100	1100.0	0.0	0.0	
1200	1200.0	0.0	0.0	
1300	1300.0	0.0	0.0	

### \* Water Balance :

Weight (Kg.)	Reading	Diff.	% of Error	Max +/- 1%
100	100.0	0.0	0.0	
200	200.0	0.0	0.0	
300	300.0	0.0	0.0	
400	400.0	0.0	0.0	
500	500.0	0.0	0.0	

### \* Addmixture Balance :

Weight (Kg.)	Reading	Diff.	% of Error	Max +/- 3%
5	5.00	0.0	0.0	
10	10.00	0.0	0.0	
15	15.00	0.0	0.0	
20	20.00	0.0	0.0	
25	25.00	0.0	0.0	

### Remarks :

- Limits according to ACI 304 & the Egyptian Code
- The readings of the above batch plant are within the specified limits.

Misr Raymond Foundations

Checked By :

Misr Raymond Foundations

S.A.E

20 Haroun St. Dokki, GIZA - ArabRepublic Of Egypt  
 Phone: (202 )7485199 - 7488164 - 7492276 - 3368891  
 Fax: (202)7486253



شركة مصر ريموند للأساسات

ش.م.ع

٢٠ شارع هارون - الدقي - الجيزة - ج.م.ع  
 تليفون : ٧٤٨٥١٩٩ - ٧٤٨٨١٦٤ - ٧٤٩٢٢٧٦ - ٣٣٦٨٨٩١  
 فاكس : ٧٤٨٦٢٥٣

### CONCRETE BATCH PLANT CALIBRATION SHEET

Date : 18/02/2021  
 Client : Al Sweedy Ready Mix  
 Location : New Cairo B. Plant No.2

Date of Calibration : 17/02/2021  
 Date of Next Calibration : 16/02/2022  
 Type of Mixer : ELBA

## \* Aggregate Balance :

Weight (Kg.)	Reading	Diff.	% of Error	Max +/- 2%
200	200	0.0	0.0	
400	400	0.0	0.0	
600	600	0.0	0.0	
800	800	0.0	0.0	
1000	1000	0.0	0.0	
1200	1200	0.0	0.0	
1400	1400	0.0	0.0	
1600	1600	0.0	0.0	
1800	1800	0.0	0.0	
2000	2000	0.0	0.0	
2200	2200	0.0	0.0	
2400	2400	0.0	0.0	
2600	2600	0.0	0.0	
2800	2800	0.0	0.0	
3000	3000	0.0	0.0	
3200	3200	0.0	0.0	
3400	3400	0.0	0.0	
3600	3600	0.0	0.0	
3800	3800	0.0	0.0	
4000	4000	0.0	0.0	

## \* Cement Balance :

Weight (Kg.)	Reading	Diff.	% of Error	Max +/- 1% or +/- 0.3% of the capacity
100	100.0	0.0	0.0	
200	200.0	0.0	0.0	
300	300.0	0.0	0.0	
400	400.0	0.0	0.0	
500	500.0	0.0	0.0	
600	600.0	0.0	0.0	
700	700.0	0.0	0.0	
800	800.0	0.0	0.0	
900	900.0	0.0	0.0	
1000	1000.0	0.0	0.0	

## \* Water Balance :

Weight (Kg.)	Reading	Diff.	% of Error	Max +/- 1%
100	100.0	0.0	0.0	
200	200.0	0.0	0.0	
300	300.0	0.0	0.0	
400	400.0	0.0	0.0	
500	500.0	0.0	0.0	

## \* Addmixture Balance :

Weight (Kg.)	Reading	Diff.	% of Error	Max +/- 3%
5	5.00	0.0	0.0	
10	10.00	0.0	0.0	
15	15.00	0.0	0.0	
20	20.00	0.0	0.0	



Remarks :

Checked By :

Misr Raymond Foundations

S.A.E

20 Haroun St. Dokki, GIZA - ArabRepublic Of Egypt  
Phone: (202) 7485199 - 7488164 - 7492276 - 3368891  
Fax: (202) 7486253



شركة مصر ريموند للأساسات  
ش.م.ع

٢٠ شارع هارون - الدقي - الجيزة - ج.م.ع  
تليفون : ٣٣٦٨٨٩١ - ٧٤٩٢٢٧٦ - ٧٤٨٨١٦٤ - ٧٤٨٥١٩٩  
فاكس : ٧٤٨٦٢٥٣

## CONCRETE BATCH PLANT CALIBRATION SHEET

Date : 22/02/2021  
Client : Al Sweedy Ready Mix  
Location : New Capital B. Plant

Date of Calibration : 21/02/2021  
Date of Next Calibration : 20/02/2022  
Type of Mixer : Nesbau

**\* Aggregate Balance :**

Weight (Kg.)	Reading	Diff.	% of Error	Max +/- 2%
200	200	0.0	0.0	
400	400	0.0	0.0	
600	600	0.0	0.0	
800	800	0.0	0.0	
1000	1000	0.0	0.0	
1200	1200	0.0	0.0	
1400	1400	0.0	0.0	
1600	1600	0.0	0.0	
1800	1800	0.0	0.0	
2000	2000	0.0	0.0	
2200	2200	0.0	0.0	
2400	2400	0.0	0.0	
2600	2600	0.0	0.0	
2800	2800	0.0	0.0	
3000	3000	0.0	0.0	
3200	3200	0.0	0.0	
3400	3400	0.0	0.0	
3600	3600	0.0	0.0	
3800	3800	0.0	0.0	
4000	4000	0.0	0.0	
4200	4200	0.0	0.0	
4400	4400	0.0	0.0	

**\* Aggregate Balance :**

Weight (Kg.)	Reading	Diff.	% of Error	Max +/- 2%
4600	4600	0.0	0.0	
4800	4800	0.0	0.0	
5000	5000	0.0	0.0	

**Remarks :**

- Limits according to ACI 304 & the Egyptian Code
- The readings of the above batch plant are within the specified limits.

**Page 1 of 2**

Checked By :

Eng. Ashraf A. Zaki



Misr Raymond Foundations  
S.A.E

20 Haroun St. Dokki, GIZA - ArabRepublic Of Egypt  
Phone: (202) 7485199 - 7488164 - 7492276 - 3368891  
Fax: (202) 7486253



شركة مصر ريموند للأساسات  
ش.م.ع

٢٠ شارع هارون - الدقي - الجيزة - ج.م.ع  
تليفون : ٧٤٨٥١٩٩ - ٧٤٨٨١٦٤ - ٧٤٩٢٢٧٦ - ٣٣٦٨٨٩١  
فاكس : ٧٤٨٦٢٥٣

### CONCRETE BATCH PLANT CALIBRATION SHEET

Date : 22/02/2021  
Client : Al Sweedy Ready Mix  
Location : New Capital B. Plant

Date of Calibration : 21/02/2021  
Date of Next Calibration : 20/02/2022  
Type of Mixer : Nesbau

**\* Cement Balance :**

Weight (Kg.)	Reading	Diff.	% of Error	Max +/- 1% or +/- 0.3% of the capacity
100	100.0	0.0	0.0	
200	200.0	0.0	0.0	
300	300.0	0.0	0.0	
400	400.0	0.0	0.0	
500	500.0	0.0	0.0	
600	600.0	0.0	0.0	
700	700.0	0.0	0.0	
800	800.0	0.0	0.0	
900	900.0	0.0	0.0	
1000	1000.0	0.0	0.0	
1100	1100.0	0.0	0.0	
1200	1200.0	0.0	0.0	
1300	1300.0	0.0	0.0	

**\* Addmixture Balance :**

Weight (Kg.)	Reading	Diff.	% of Error	Max +/- 3%
5	5.00	0.0	0.0	
10	10.00	0.0	0.0	
15	15.00	0.0	0.0	
20	20.00	0.0	0.0	
25	25.00	0.0	0.0	

**\* Water Balance :**

Weight (Kg.)	Reading	Diff.	% of Error	Max +/- 1%
100	100.0	0.0	0.0	
200	200.0	0.0	0.0	
300	300.0	0.0	0.0	
400	400.0	0.0	0.0	
500	500.0	0.0	0.0	
600	600.0	0.0	0.0	

Page 2 of 2

**Remarks :**

- Limits according to ACI 304 & the Egyptian Code
- The readings of the above batch plant are within

Checked By :

Misr Raymond Foundations



# COMPRESSIVE TESTING RESULTS

 **EL SEWEDY**  
READY MIX **2021**

## COMPRESSIVE STRENGTH OF CONCRETE SAMPLES

Client: شركة الرواد  
Project: محطة كهرباء بنى سويف  
Class of concrete: 300 kg / cm<sup>2</sup>  
Type of cement: S.R.C  
Brand name of cement: type V  
Destination: Gantry

Lab. No.  
Report No.1. (1/1)  
Shape of casting mold: CUBES  
No. of cubes: 3  
Type of admixture: G

AGE	28 day					
SYMBOL	1	2	3			
Slump (initial) in Cm	18	18	18			
Date of casting	2016-06-22					
Date of testing	2016-07-20					
Dimension of mold cm	15*15*15					
Weight of sample Kg	8.168	8.175	8.159			
Density of concrete t/m <sup>3</sup>	2.42	2.42	2.42			
Crushing load Kn	971	940	968			
Strength kg/cm <sup>2</sup>	440.2	426.1	438.8			
Average of Strength kg/cm <sup>2</sup>	435.0					

Remarks:

Tested by  
Tec.  
Ahmed Abd El hakem



Checked by  
ENG.  
Ayman Saleh



### COMPRESSIVE STRENGTH OF CONCRETE SAMPLES

Client: U E C C شركة  
 Project: Capital Gardns Palm Hills  
 Class of concrete: 250kg / cm<sup>2</sup>  
 Type of cement: O.P.C.  
 Brand name of cement: type 1  
 Destination: B 58 قواعد مسلحة بلوك

Lab. No.1  
 Report No.1. (1/19)  
 Shape of casting mold: CUBES  
 No. of cubes:6  
 Type of admixture:G

AGE	28 day					
SYMBOL	1	2	3	4	5	6
Slump (initial) in Cm	18	18	18	18	18	18
Date of casting	11-12-2016					
Date of testing	08-01-2017					
Dimension of mold cm	15*15*15					
Weight of sample Kg	8.228	8.196	8.316	8.228	8.247	8.301
Density of concrete t/m <sup>3</sup>	2.44	2.43	2.46	2.44	2.44	2.46
Crushing load Kn	845	859	850	871	856	843
Strength kg/cm <sup>2</sup>	383.1	389.4	385.3	394.9	388.1	382.2
Average of Strength kg/cm <sup>2</sup>	387.1					

Remarks:

Tested by  
 Tec.  
 Ahmed Hassan

Checked by  
 ENG.  
 Mohamed Taha



## COMPRESSIVE STRENGTH OF CONCRETE SAMPLES

Client: بيرميرا  
Project: السادس من أكتوبر  
Class of concrete: 250 kg / cm<sup>2</sup>  
Type of cement: O.P.C.  
Brand name of cement: type 1  
Destination: أعمدة

Lab. No.  
Report No.1. (1/1)  
Shape of casting mold: CUBES  
No. of cubes: 3  
Type of admixture: G

AGE	28 day					
SYMBOL	1	2	3			
Slump (initial) in Cm	18	18	18			
Date of casting	2017-04-18					
Date of testing	2017-05-16					
Dimension of mold cm	15*15*15					
Weight of sample Kg	8.296	8.315	8.223			
Density of concrete t/m <sup>3</sup>	2.46	2.46	2.44			
Crushing load Kn	811	785	821			
Strength kg/cm <sup>2</sup>	367.7	355.9	372.2			
Average of Strength kg/cm <sup>2</sup>	365.2					

Remarks:

Tested by  
Tec.  
Ahmed Mostafa



Checked by  
ENG.  
Ayman Saleh

### COMPRESSIVE STRENGTH OF CONCRETE SAMPLES

Client: سفنكس

Project: عمارات سكنية - الشروق

Class of concrete: 250 kg / cm<sup>2</sup>

Type of cement: O.P.C.

Brand name of cement: type 1

Destination: قواعد

Lab. No.

Report No.1. (1/1)

Shape of casting mold: CUBES

No. of cubes: 3

Type of admixture: G

AGE	28 day					
SYMBOL	1	2	3			
Slump (initial) in Cm	18	18	18			
Date of casting	2017-04-11					
Date of testing	2017-05-09					
Dimension of mold cm	15*15*15					
Weight of sample Kg	8.263	8.247	8.196			
Density of concrete t/m <sup>3</sup>	2.45	2.44	2.43			
Crushing load Kn	831	812	808			
Strength kg/cm <sup>2</sup>	376.7	368.1	366.3			
Average of Strength kg/cm <sup>2</sup>	370.4					

Remarks:

Tested by

Tec.

Ahmed Hassan



11/5/17

Checked by

ENG.

Ayman Saleh

## COMPRESSIVE STRENGTH OF CONCRETE SAMPLES

Client: سفنكس

Project: عمارات سكنية - الشروق

Class of concrete: 250 kg / cm<sup>2</sup>

Type of cement: O.P.C.

Brand name of cement: type 1

Destination: قواعد

Lab. No.

Report No.1. (1/1)

Shape of casting mold: CUBES

No. of cubes: 3

Type of admixture: G

AGE	28 day					
SYMBOL	1	2	3			
Slump (initial) in Cm	18	18	18			
Date of casting	2017-04-11					
Date of testing	2017-05-09					
Dimension of mold cm	15*15*15					
Weight of sample Kg	8.263	8.247	8.196			
Density of concrete t/m <sup>3</sup>	2.45	2.44	2.43			
Crushing load Kn	831	812	808			
Strength kg/cm <sup>2</sup>	376.7	368.1	366.3			
Average of Strength kg/cm <sup>2</sup>	370.4					

Remarks:

Tested by

Tec.

Ahmed Hassan

Checked by

ENG.

Ayman Saleh



أحمد حسن

### COMPRESSIVE STRENGTH OF CONCRETE SAMPLES

Client: جاما للتجارة والمقاولات

Lab. No.1

Project: MIVIDA 2

Report No.1. (1/3)

Class of concrete: 250kg / cm<sup>2</sup>

Shape of casting mold: CUBES

Type of cement: O.P.C.325

No. of cubes: 3

Brand name of cement: type 1

Type of admixture: G

Destination: T M

AGE	28 day					
SYMBOL	1	2	3			
Slump (initial) in Cm	18	18	18			
Date of casting	18-07-2016					
Date of testing	15-08-2016					
Dimension of mold cm	15*15*15					
Weight of sample Kg	8.27	8.414	8.336			
Density of concrete t/m <sup>3</sup>	2.45	2.49	2.47			
Crushing load Kn	801	821	795			
Strength kg/cm <sup>2</sup>	363.1	372.2	360.4			
Average of Strength kg/cm <sup>2</sup>	365.2					

Remarks:

تم التكسير بحضور م / محمد صلاح - شركة Ehaf  
و بحضور م / محمد عاطف - شركة جاما

Tested by

Checked by

Tec.

ENG.

AHMED EL SAYED

Ayman Saleh



أحمد صالح

## COMPRESSIVE STRENGTH OF CONCRETE SAMPLES

Client: جاما للتجارة والمقاولات  
Project: كايرو فاستيفال سيتى  
Class of concrete: 300kg / cm<sup>2</sup>  
Type of cement: O.P.C.  
Brand name of cement: type 1  
Destination: قواعد مسلحة

Lab. No.1  
Report No.1. (1/2)  
Shape of casting mold: CUBES  
No. of cubes:3  
Type of admixture:G

AGE	28 day					
SYMBOL	1	2	3			
Slump (initial) in Cm	18	18	18			
Date of casting	29-03-2016					
Date of testing	26-04-2016					
Dimension of mold cm	15*15*15					
Weight of sample Kg	8.231	8.206	8.285			
Density of concrete t/m <sup>3</sup>	2.44	2.43	2.45			
Crushing load Kn	911	920	936			
Strength kg/cm <sup>2</sup>	413.0	417.1	424.3			
Average of Strength kg/cm <sup>2</sup>	418.1					

Remarks:

Tested by  
Tec.  
AHMED EL SAYED

Checked by  
ENG.  
Ayman Saleh



أحمد السويدي

### COMPRESSIVE STRENGTH OF CONCRETE SAMPLES

Client: مصنع السويدي للأسمنت

Project: العين السخنة

Class of concrete: 350kg / cm<sup>2</sup>

Type of cement: O.P.C. Detac

Brand name of cement: type 1

Destination: Slip Form Silo 4

Lab. No.2 العين السخنة

Report No.1. (1/134)

Shape of casting mold: CUBES

No. of cubes: 6

Type of admixture: G

AGE	28 day					
SYMBOL	1	2	3	4	5	6
Slump (initial) in Cm	16	16	16	16	16	16
Date of casting	2016-02-07					
Date of testing	2016-03-06					
Dimension of mold cm	15*15*15					
Weight of sample Kg	8.279	8.256	8.297	8.219	8.281	8.276
Density of concrete t/m <sup>3</sup>	2.45	2.45	2.46	2.44	2.45	2.45
Crushing load Kn	1197	1136	1148	1159	1148	1162
Strength kg/cm <sup>2</sup>	542.6	515.0	520.4	525.4	520.4	526.8
Average of Strength kg/cm <sup>2</sup>	525.1					

Remarks:

Tested by

ENG.

Mohamed Roshdy

Checked by

ENG.

Ayman Saleh



السويدي

## COMPRESSIVE STRENGTH OF CONCRETE SAMPLES

Client: Orascom  
Project: Galalah  
Class of concrete: 400kg / cm<sup>2</sup>  
Type of cement: O.P.C. Detac  
Brand name of cement: type 1  
Destination: قواعد مسلحة

Lab. No. 2 العين السخنة  
Report No. 1. (1/1)  
Shape of casting mold: CUBES  
No. of cubes: 3  
Type of admixture: G

AGE	28 day					
SYMBOL	1	2	3			
Slump (initial) in Cm	16	16	16			
Date of casting	2017-03-14					
Date of testing	2017-04-11					
Dimension of mold cm	15*15*15					
Weight of sample Kg	8.323	8.296	8.267			
Density of concrete t/m <sup>3</sup>	2.47	2.46	2.45			
Crushing load Kn	1278	1269	1291			
Strength kg/cm <sup>2</sup>	579.4	575.3	585.2			
Average of Strength kg/cm <sup>2</sup>	580.0					

Remarks:

Tested by  
ENG.  
Abd Elkhalik

Checked by  
ENG.  
Ayman Saleh



أحمد صالح



### COMPRESSIVE STRENGTH OF CONCRETE SAMPLES

Client: Redcon  
 Project: Oriana- Cairo Festival  
 Class of concrete: 300kg / cm<sup>2</sup>  
 Type of cement: O.P.C.  
 Brand name of cement: type 1  
 Destination: أعمدة الارضى فيلا 132

Lab. No.1  
 Report No.1. (1/168)  
 Shape of casting mold: CUBES  
 No. of cubes:4  
 Type of admixture:G

AGE	28 day			
SYMBOL	1	2	3	4
Slump (initial) in Cm	18	18	18	18
Date of casting	17-01-2017			
Date of testing	14-02-2017			
Dimension of mold cm	15*15*15			
Weight of sample Kg	8.226	8.315	8.296	8.227
Density of concrete t/m <sup>3</sup>	2.44	2.46	2.46	2.44
Crushing load Kn	930	911	901	922
Strength kg/cm <sup>2</sup>	421.6	413.0	408.5	418.0
Average of Strength kg/cm <sup>2</sup>	415.3			

Remarks:

تم التكسير بحضور م / أحمد أمين مهندس الجودة

Tested by  
 Tec.  
 Ahmed El sayed



Checked by  
 ENG.  
 Ayman Saleh

أحمد أمين